

NikolaTesla combines two separate appliances in just one product - the induction hob and a cooker hood - to create the extractor-hob, thus redefining the design possibilities and the way you use your kitchen.

ENHANCE YOUR EXPERIENCE BY CHOOSING THE MODEL THAT SUITS YOU BEST.

The NikolaTesla range of integrated extractor hobs is Elica's answer to the demand for style, performance and ease of use. But it doesn't stop there.

NikolaTesla is the solution for anyone whose aim is to conjure up an emotion in the kitchen as well as cooking. The emotion of being amazed. The emotion of outdoing yourself with ambitious recipes and not having to worry about the fumes. The peace of mind of being able to install and use the product with the greatest of ease. The pleasant surprise of being able to clean it quickly and easily. The enjoyment of using an extractor-hob every day that seems to have been tailor-made for your home.

With cutting edge technology, designed to provide the best extraction and cooking performance, encased in a simple yet sophisticated design, manufactured from tough materials with beautifully crafted finishes - this is NikolaTesla.



VIEW AND DISCOVER

NEW

NIKOLATESLA ONE HP

SIZE 83 x 51.5 x 21cm
 CUT OUT SIZE 80.7 x 49.2cm
 VERSIONS Duct-out and Re-circulating
 Black glass



NEW

NIKOLATESLA UNPLUGGED

SIZE 90 x 53 x 21cm
 CUT OUT SIZE 80.7 x 49.2cm
 VERSIONS Duct-out and Re-circulating
 Black glass, black glass + stainless steel



NIKOLATESLA UNPLUGGED BLACK GLASS



NIKOLATESLA UNPLUGGED BLACK GLASS + STAINLESS STEEL

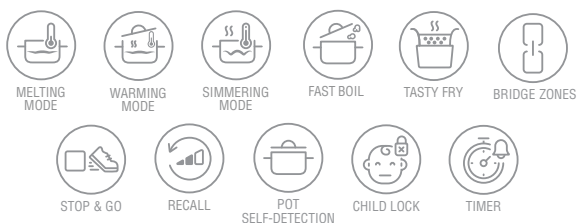


EXTRACTOR

	Duct-out	Re-circulating
Controls	Individual touch control	Individual touch control
Speeds	9 plus boost	9 plus boost
Booster airflow	640	545
Airflow speed	5.1 m/s	5.1 m/s
Noise level min-max	34-66 dBA	40-72 dBA
Total power absorption	175 W	175 W
Ceramic filter	*	Included

INDUCTION HOB

Controls	Touch control direct slider
Power levels	9 plus boost
Maximum power absorption	7.2 kW
Cooking zones	1 220mm x 184 mm - 2.1kW / 3.7kW 2 220mm x 184 mm - 2.1kW / 3.7kW 3 220mm x 184 mm - 2.1kW / 3.7kW 4 220mm x 184 mm - 2.1kW / 3.7kW
Bridge zones	2



MODELS

NIKOLATESLA ONE HP Black Duct-out	PRF0120975B
NIKOLATESLA ONE HP Black Re-circulating	PRF0120976B

EXTRACTOR

	Duct-out	Re-circulating
Controls	Electronic rotary control	Electronic rotary control
Speeds	9 plus boost	9 plus boost
Booster airflow	630	550
Airflow speed	5.1 m/s	5.1 m/s
Noise level min-max	33-66 dBA	39-72 dBA
Total power absorption	175W	175W
Ceramic filter	*	Included

INDUCTION HOB

Controls	Electronic rotary control
Power levels	9 plus boost
Maximum power absorption	7.2 kW
Cooking zones	1 220mm x 184 mm - 2.1kW/3.7kW 2 220mm x 184 mm - 2.1kW/3.7kW 3 220mm x 184 mm - 2.1kW/3.7kW 4 220mm x 184 mm - 2.1kW/3.7kW
Bridge zones	2



MODELS

NIKOLATESLA UNPLUGGED Black Duct-out	PRF0184546
NIKOLATESLA UNPLUGGED Black Re-circulating	PRF0184019
NIKOLATESLA UNPLUGGED Black and stainless steel Duct-out	PRF0184547
NIKOLATESLA UNPLUGGED Black and stainless steel Re-circulating	PRF0184545

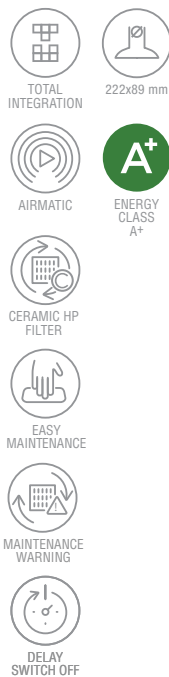
* Not used for Duct-out hoods

* Not used for Duct-out hoods

NEW

NIKOLATESLA SWITCH GLOW

SIZE 83 x 51.5 x 21cm
 CUT OUT SIZE 80.7 x 49.2cm
 VERSIONS Duct-out and Re-circulating
 Black glass



NIKOLATESLA SWITCH

SIZE 83 x 51.5 x 21cm
 CUT OUT SIZE 80.7 x 49.2cm
 VERSIONS Duct-out and Re-circulating
 Black glass, white glass "ICE GREY"



NIKOLATESLA SWITCH BLACK GLASS



NIKOLATESLA SWITCH WHITE GLASS "ICE GREY"

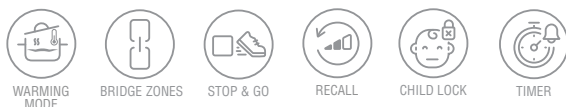


EXTRACTOR

	Duct-out	Re-circulating
Controls	Individual touch control	Individual touch control
Speeds	9 plus boost	9 plus boost
Booster airflow	630	550
Airflow speed	5.1 m/s	5.1 m/s
Noise level min-max	33-66 dBA	39-72 dBA
Total power absorption	175W	175W
Ceramic filter	*	Included

INDUCTION HOB

Controls	Touch control direct slider
Power levels	9 plus boost
Maximum power absorption	7.2 kW
Cooking zones	1 210mm x 191mm - 2.1 kW / 3 kW 2 210mm x 191mm - 2.1 kW / 3 kW 3 210mm x 191mm - 2.1 kW / 3 kW 4 210mm x 191mm - 2.1 kW / 3 kW
Bridge zones	2



MODELS

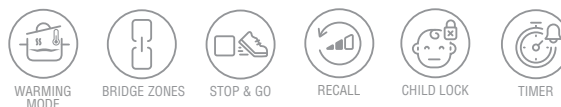
NIKOLATESLA SWITCH GLOW Black Duct-out	PRF0183880
NIKOLATESLA SWITCH GLOW Black Re-circulating	PRF0183878

EXTRACTOR

	Duct-out	Re-circulating
Controls	Individual touch control	Individual touch control
Speeds	9 plus boost	9 plus boost
Booster airflow	630	550
Airflow speed	5.1 m/s	5.1 m/s
Noise level min-max	33-66 dBA	39-72 dBA
Total power absorption	175W	175W
Ceramic filter	*	Included

INDUCTION HOB

Controls	Touch control direct slider
Power levels	9 plus boost
Maximum power absorption	7.2 kW
Cooking zones	1 210mm x 191mm - 2.1 kW / 3 kW 2 210mm x 191mm - 2.1 kW / 3 kW 3 210mm x 191mm - 2.1 kW / 3 kW 4 210mm x 191mm - 2.1 kW / 3 kW
Bridge zones	2



MODELS

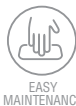
NIKOLATESLA SWITCH Black Duct-out	PRF0189241
NIKOLATESLA SWITCH Black Re-circulating	PRF0189247
NIKOLATESLA SWITCH White Duct-out	PRF0146216A
NIKOLATESLA SWITCH White Re-circulating	PRF0146213A

* Not used for Duct-out hoods

* Not used for Duct-out hoods

NIKOLATESLA ONE

SIZE 83 x 51.5 x 21cm
CUT OUT SIZE 80.7 x 49.2cm
VERSIONS Duct-out and Re-circulating
Black glass



NIKOLATESLA LIBRA

SIZE 83 x 51.5 x 21cm
CUT OUT SIZE 80.7 x 49.2cm
VERSIONS Duct-out and Re-circulating
Black glass + cast iron, white glass "ICE GREY" + cast iron



NIKOLATESLA LIBRA BLACK GLASS



NIKOLATESLA LIBRA WHITE GLASS "ICE GREY"



EXTRACTOR

	Duct-out	Re-circulating
Controls	Circular touch control	Circular touch control
Speeds	9 plus boost	9 plus boost
Booster airflow	640	545
Airflow speed	5.1 m/s	5.1 m/s
Noise level min-max	34-66 dBA	40-72 dBA
Total power absorption	175 W	175 W
Ceramic filter	*	Included

INDUCTION HOB

Controls	Touch control
Power levels	9 plus boost
Maximum power absorption	7.2 kW
Cooking zones	1 210mm x 191mm - 1.65kW / 1.85 kW 2 210mm x 191mm - 2.1 kW / 3.0 kW 3 Ø 200mm - 2.3 kW / 3.0 kW 4 Ø 160mm - 1.2 kW / 1.4 kW
Bridge zones	1 Left



EXTRACTOR

	Duct-out	Re-circulating
Controls	Slider touch control	Slider touch control
Speeds	3 plus 2 boost	3 plus 2 boost
Booster airflow	610	545
Airflow speed	5.1 m/s	5.1 m/s
Noise level min-max	46-69 dBA	48-71 dBA
Total power absorption	250 W	250 W
Ceramic filter	*	Included

INDUCTION HOB

Controls	Slider touch control
Power levels	9 plus boost
Maximum power absorption	7.2 kW
Cooking zones	1 210mm x 191mm - 1.65kW / 1.85 kW 2 210mm x 191mm - 2.1kW / 3.0 kW 3 210mm x 191mm - 2.1kW / 3.0 kW 4 210mm x 191mm - 1.65kW / 1.85 kW
Bridge zones	2



MODELS

NIKOLATESLA ONE Black Duct-out	PRF0120977A
NIKOLATESLA ONE Black Re-circulating	PRF0120978A

MODELS

NIKOLATESLA LIBRA Black Duct-out	PRF0147744A
NIKOLATESLA LIBRA Black Re-circulating	PRF0147745A
NIKOLATESLA LIBRA White Duct-out	PRF0147774A
NIKOLATESLA LIBRA White Re-circulating	PRF0147775A

* Not used for Duct-out hoods

* Not used for Duct-out hoods

NIKOLATESLA PRIME S NIKOLATESLA PRIME S PLUS

SIZE 83 x 51.5 x 25cm
CUT OUT SIZE 75 x 49 cm

VERSIONS Duct-out and Re-circulating
Black glass + aluminium
cast iron effect

NIKOLATESLA FLAME

SIZE 88 x 51 x 21cm
CUT OUT SIZE 84 x 48.7cm
VERSIONS Duct-out and Re-circulating
Black glass + cast iron, grey glass + cast iron



NIKOLATESLA PRIME S



NIKOLATESLA PRIME S PLUS



NIKOLATESLA FLAME BLACK



NIKOLATESLA FLAME GREY



EXTRACTOR

	Duct-out	Re-circulating
Controls	Slider touch control	Slider touch control
Speeds	4 plus boost	4 plus boost
Booster airflow	620	535
Airflow speed	5.1 m/s	5.1 m/s
Noise level min-max	44-63 dBA	49-69 dBA
Total power absorption	160 W	160 W
Ceramic filter	*	Included

INDUCTION HOB

Controls	Slider touch control
Power levels	9 plus boost
Maximum power absorption	7.2 kW
Cooking zones	2 (1.2kW / 1.4kW) - Ø 160mm 2 (2.3kW / 3kW) - Ø 200mm
Bridge zones	1 Left (Prime S Plus)

NIKOLATESLA PRIME S PLUS



MODELS

NIKOLATESLA PRIME S Duct-out	PRF0189225
NIKOLATESLA PRIME S Re-circulating	PRF0189229
NIKOLATESLA PRIME S PLUS Duct-out	PRF0182325
NIKOLATESLA PRIME S PLUS Re-circulating	PRF0186751

* Not used for Duct-out hoods

EXTRACTOR

	Duct-out	Re-circulating
Controls	Rotary	Rotary
Speeds	3 plus 2 boost	3 plus 2 boost
Booster airflow	600	530
Airflow speed	5.1 m/s	5.1 m/s
Noise level min-max	45-63 dBA	49-69 dBA
Total power absorption	250 W	250 W
Ceramic filter	*	Included

GAS HOB

Controls	Rotary
Cooking zones	1 Semi-rapid 1.75 kW 2 Dual special 3.5 kW 3 Rapid 3 kW 4 Semi-rapid 1.75 kW



MODELS

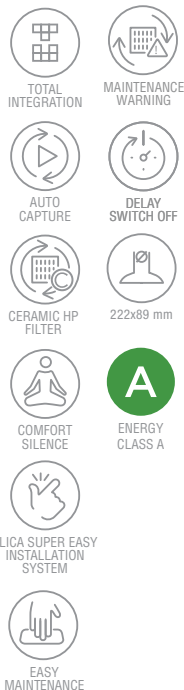
NIKOLATESLA FLAME Black Duct-out	PRF0147740A
NIKOLATESLA FLAME Black Re-circulating	PRF0147741A
NIKOLATESLA FLAME Grey Duct-out	PRF0147742A
NIKOLATESLA FLAME Grey Re-circulating	PRF0147743A

* Not used for Duct-out hoods

NEW

NIKOLATESLA FIT XL

SIZE	83 x 51.5 x 25cm
CUT OUT SIZE	75 x 49cm
VERSIONS	Duct-out – Re-circulating with optional kit Black glass



NIKOLATESLA FIT

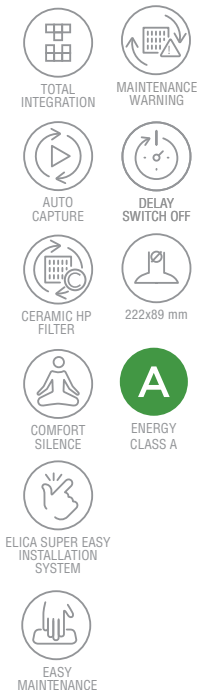
SIZE	60 x 51.5 x 25cm, 72 x 51.5 x 25cm
CUT OUT SIZE	56 x 49cm
VERSIONS	Duct-out – Re-circulating with optional kit Black glass



NIKOLATESLA FIT 60 CM



NIKOLATESLA FIT 72 CM

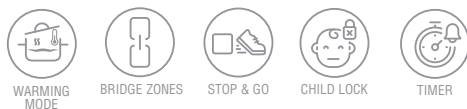


EXTRACTOR

	Duct-out	Re-circulating
Controls	Slider touch control	Slider touch control
Speeds	4 plus boost	4 plus boost
Booster airflow	620	520
Airflow speed	5.1 m/s	5.1 m/s
Noise level min-max	43-61 dBA	44-68 dBA
Total power absorption	160 W	160 W

INDUCTION HOB

Controls	Slider touch control
Power levels	9 plus boost
Maximum power absorption	7.2 kW
Cooking zones	1 210mm x 191mm - 1.65kW / 1.85 kW 2 210mm x 191mm - 2.1 kW / 3.0 kW 3 210mm x 191mm - 2.1 kW / 3.0 kW 4 210mm x 191mm - 1.65 kW / 1.85 kW
Bridge zones	2



MODELS

NIKOLATESLA FIT XL Black Duct-out	PRF0179476
-----------------------------------	------------

EXTRACTOR

	Duct-out	Re-circulating
Controls	Slider touch control	Slider touch control
Speeds	4 plus boost	4 plus boost
Booster airflow	620	580
Airflow speed	5.1 m/s	5.1 m/s
Noise level min-max	37-61 dBA	48-69 dBA
Total power absorption	160 W	160 W

INDUCTION HOB

Controls	Slider touch control
Power levels	9 plus boost
Maximum power absorption	7.2 kW
Cooking zones	1 210mm x 191mm - 2.1 kW / 3.0 kW 2 210mm x 191mm - 1.65 kW / 1.85 kW 3 Ø 200mm - 2.3 kW / 3.0 kW 4 Ø 160mm - 1.2 kW / 1.4 kW
Bridge zones	1 Left



MODELS

NIKOLATESLA FIT 60 Black Duct-out	PRF0189181
NIKOLATESLA FIT 72 Black Duct-out	PRF0189188

NEW

NIKOLATESLA FIT 3Z

SIZE	60 x 51.5 x 26cm, 72 x 51.5 x 26cm
CUT OUT SIZE	56 x 49cm
VERSIONS	Duct-out – Re-circulating with optional kit Black glass



NIKOLATESLA FIT 3Z 60 CM



NIKOLATESLA FIT 3Z 72 CM

TOTAL
INTEGRATIONMAINTENANCE
WARNINGAUTO
CAPTUREDELAY
SWITCH OFFCERAMIC HP
FILTER

222x89 mm

COMFORT
SILENCEENERGY
CLASS AELICA SUPER EASY
INSTALLATION
SYSTEMEASY
MAINTENANCE

EXTRACTOR

	Duct-out	Re-circulating
Controls	Slider touch control	Slider touch control
Speeds	4 plus boost	4 plus boost
Booster airflow	600	490
Airflow speed	5.1 m/s	5.1 m/s
Noise level min-max	42-61 dBA	52-68 dBA
Total power absorption	160 W	160 W

INDUCTION HOB

Controls	Slider touch control
Power levels	9 plus boost
Absorption	7.2 kW
Cooking zones	1 Ø 300mm - 2.5 kW / 3.6 kW Ø 180mm - 2.1 kW / 2.5 kW 2 Ø 140mm - 0.9 kW / 1.35 kW 3 Ø 180mm - 1.4 kW / 2.1 kW

WARMING
MODEDUAL
ZONEEXTRA LARGE
ZONE

STOP & GO



CHILD LOCK



TIMER

MODELS

NIKOLATESLA FIT 3Z 60 Black Duct-out	PRF0184526
NIKOLATESLA FIT 3Z 72 Black Duct-out	PRF0184551

NEW

NIKOLATESLA ALPHA

SIZE	78 x 51,5 x 25cm
CUT OUT SIZE	75 x 49cm
VERSIONS	Duct-out / Re-circulating with optional kit Black glass

TOTAL
INTEGRATIONMAINTENANCE
WARNINGAUTO
CAPTUREDELAY
SWITCH OFFCERAMIC HP
FILTER

222x89 mm

COMFORT
SILENCEENERGY
CLASS AELICA SUPER EASY
INSTALLATION
SYSTEMEASY
MAINTENANCE

EXTRACTOR

	Duct-out	Re-circulating
Controls	Slider touch control	Slider touch control
Speeds	4 plus boost	4 plus boost
Booster airflow	580	475
Airflow speed	5.1 m/s	5.1 m/s
Noise level min-max	43-61 dBA	47-67 dBA
Total power absorption	160 W	160 W

INDUCTION HOB

Controls	Slider touch control
Power levels	9 plus boost
Maximum power absorption	7.2 kW
Cooking zones	1 Ø 160mm - 1.2 kW / 1.4 kW 2 Ø 200mm - 2.3 kW / 3.0 kW 2 Ø 200mm - 2.3 kW / 3.0 kW 3 Ø 160mm - 1.2 kW / 1.4 kW

WARMING
MODE

STOP & GO



CHILD LOCK



TIMER

MODELS

NIKOLATESLA ALPHA Black Duct-out	PRF0183127
----------------------------------	------------

MAXIMUM INSTALLATION FLEXIBILITY

Elica wanted their Nikolatesla extractor-hobs to have greatest possible installation flexibility so they designed two different platforms in order to meet all installation requirements. This guide explains the basic differences between the two platforms and which models use each one, so you can decide which will best suit your kitchen.

NIKOLATESLA FIT, FIT XL, FIT 3Z, ALPHA, PRIME S, PRIME S PLUS

The compact system is the latest and most flexible allowing great versatility when installing the product in the duct-out mode and the choice of three conversion kits (2 for NIKOLATESLA PRIME S) continues this flexibility for installation in re-circulating mode.

NIKOLATESLA UNPLUGGED, SWITCH GLOW, SWITCH, ONE HP, ONE, LIBRA, FLAME

Products using this platform are available in duct out or re-circulating versions. The most common basic ducting used for standard installation of each model is included with each product.

	AVAILABLE IN	DUCTING INCLUDED	RE-CIRCULATING MODE CONVERSION KIT	HEIGHT
NIKOLATESLA FIT	Duct-out	---	PLINTH IN / PLINTH OUT / BACK OUTLET	25 cm
NEW NIKOLATESLA FIT XL	Duct-out	---	PLINTH IN / PLINTH OUT / BACK OUTLET	25 cm
NEW NIKOLATESLA FIT 3Z	Duct-out	---	PLINTH IN / PLINTH OUT / BACK OUTLET	26 cm
NEW NIKOLATESLA ALPHA	Duct-out	---	PLINTH IN / PLINTH OUT / BACK OUTLET	25 cm
NEW NIKOLATESLA PRIME S NIKOLATESLA PRIME S PLUS	Duct-out	---	PLINTH IN / PLINTH OUT / BACK OUTLET	25 cm
	Re-circulating	✓ (PLINTH OUT)	---	
NEW NIKOLATESLA UNPLUGGED	Duct-out	✓	---	21 cm
	Re-circulating	✓ (PLINTH OUT)	---	
NEW NIKOLATESLA SWITCH GLOW	Duct-out	✓	---	21 cm
	Re-circulating	✓ (PLINTH OUT)	---	
NIKOLATESLA SWITCH	Duct-out	✓	---	21 cm
	Re-circulating	✓ (PLINTH OUT)	---	
NIKOLATESLA ONE HP NIKOLATESLA ONE	Duct-out	✓	KIT0130427A	21 cm
	Re-circulating	✓ (PLINTH OUT)	---	
NIKOLATESLA LIBRA	Duct-out	✓	KIT0130427A	21 cm
	Re-circulating	✓ (PLINTH OUT)	---	
NIKOLATESLA FLAME	Duct-out	✓	KIT0130427A	21 cm
	Re-circulating	✓ (PLINTH OUT)	---	

NIKOLATESLA FIT | FIT XL | FIT 3Z | ALPHA

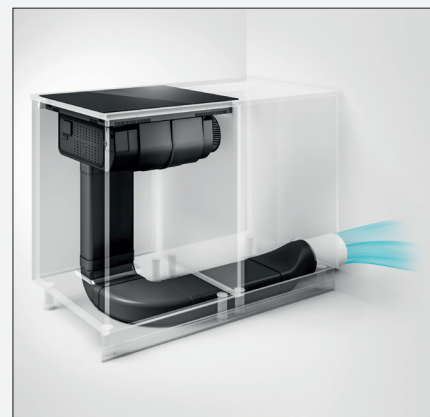

[▶ INSTALLATION VIDEO](#)

NikolaTesla models with this platform provide great installation flexibility. Installing the extractor-hob in duct-out mode ensures the highest efficiency and quietest operation. Choose the exact ducting required from the range of ducting available from Elica – see page 13 for details.

If you need your extractor-hob to be re-circulating Elica has designed 3 different kits that convert the product to the re-circulating mode. Choose whichever suits your installation requirements best.



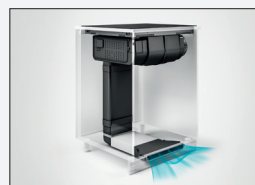
Rear outlet



Side outlet (right or left)



Installation "PLINTH IN"



Installation "PLINTH OUT"



Installation "REAR OUTLET"

KIT0167756 | RE-CIRCULATING INSTALLATION KIT UNDER PLINTH (MINIMUM HEIGHT 6CM) "PLINTH IN"

If the product is supplied in duct-out mode, this kit will allow it to be installed in re-circulating (filtering) mode. The filtered air will be conveyed into the cabinet base. To minimise condensation when using this kit ensure there is adequate ventilation or use the PLINTH OUT kit on page 10.

A chrome-plated trim profile is provided for any vent slot made in the plinth.



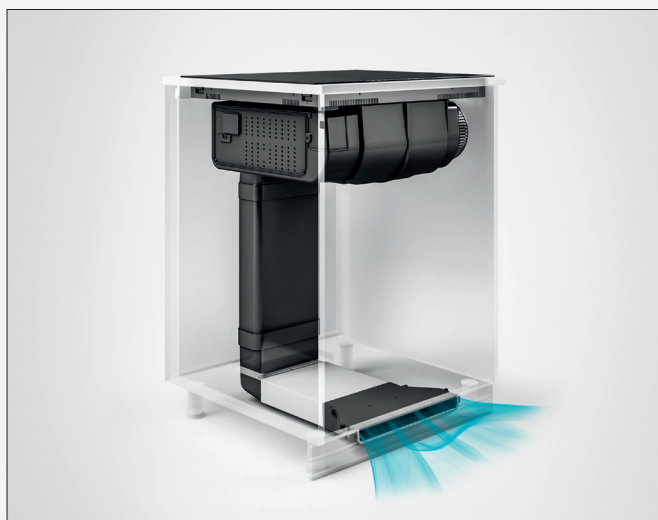
- Ceramic filters (2 pieces)
- 90° - 94 x 227 mm rectangular bend
- 500 x 94 x 227 mm rectangular pipe
- 90° rectangular bend from vertical 94 x 227 mm to horizontal 55 x 227 mm
- Under baseboard deflector
- Chrome-plated trim profile
- Adhesive Tape

KIT0167757 | RE-CIRCULATING INSTALLATION KIT UNDER PLINTH (MINIMUM HEIGHT 6CM) “PLINTH OUT”

This kit is similar to KIT0167756 but is designed to exhaust the filtered air through ducting directly to an outlet in the plinth.



- Ceramic filters, 2 pieces
- 90° - 94 x 227 mm rectangular bend
- 500 x 94 x 227 mm rectangular pipe
- 90° rectangular bend from vertical 94 x 227 mm to horizontal 50 x 227 mm
- Outlet connection to be fitted outside the plinth with chrome-plated trim profile
- 218 x 55 x 300 mm rectangular pipe
- Outlet connection support
- Adhesive tape



KIT0180522 | RE-CIRCULATING INSTALLATION KIT “BACK OUTLET”

This kit allows the product to be converted into re-circulating mode but the air flow is conveyed backwards, in the simplest possible way, into the space between the wall and the cabinet without the use of any additional pipes.



- Ceramic filters, 2 pieces
- Telescopic outlet connection
- Chrome-plated trim profile

NIKOLATESLA UNPLUGGED | SWITCH GLOW | SWITCH | ONE HP | ONE | LIBRA | PRIME S | PRIME S PLUS | FLAME

This platform has also been designed to guarantee maximum installation flexibility by optimising the use of space inside the cabinet. NikolaTesla models with this platform can be purchased both in duct-out and re-circulating (filtering) versions. In both cases the product is supplied 'ready' for standard installation. A wide range of additional ducting is available – see page 13 for details.

RE-CIRCULATING MODE

The re-circulating (filtering) versions include everything needed for standard installation ducted to an outlet in the plinth including the exclusive chrome-plated trim profile to finish outlet.

Example of re-circulating mode configuration with a deep cabinet



INSTALLATION VIDEO



If the re-circulating version product code has been purchased, the packaging will contain everything needed to install NikolaTesla with a ducted outlet to the cabinet baseboard, including the exclusive chrome-plated trim profile to finish the baseboard cut, necessary for air outlet.

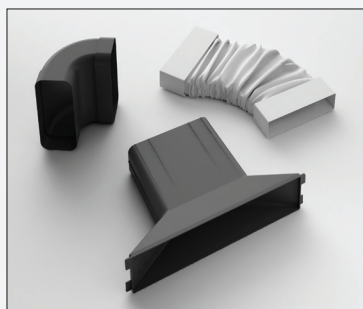
In the box (re-circulating mode PLINTH OUT*)



- Ceramic filters (3 pieces)
- Ceramic filter frame assembly
- 90° - 94 x 227 mm Rectangular bend
- 90° rectangular bend from vertical 94 x 227 mm to horizontal 50 x 227 mm
- 500 x 94 x 227 mm rectangular pipe
- 218 x 55 x 300 mm rectangular pipe
- Outlet connection to fit outside the baseboard, provided with chrome-plated trim profile
- 2 extension connections for >60 and >65 cabinet
- Outlet connection supports
- Adhesive tape

KIT0140820 | RE-CIRCULATING MODE KIT FOR DEEP CABINETS

In the case of installation in kitchen cabinets deeper than standard Elica provides a kit to move the piping as far back as required in order to maximize drawer capacity.



Available for models NIKOLATESLA ONE/ONE HP/SWITCH GLOW/SWITCH/UNPLUGGED/LIBRA/FLAME

- Extension connection for > 70 cm cabinet
- 90° - 94 x 227 mm rectangular bend
- 218 x 55 mm flexible connection
- Extension connection for > 70 cm cabinet
- 90° - 94 x 227 mm rectangular bend
- 218 x 55 mm flexible connection



Example of re-circulating mode configuration with deep cabinet

* For NikolaTesla Prime S and NikolaTesla Prime S Plus the pipes contained in the packaging may differ from the image. Refer to the installation manual.

DUCT-OUT VERSION

In the box (duct-out version)



- Rear outlet connection
- 90° - 94 x 227 mm rectangular bend
- 15° connection (4 pieces)
- 500 x 94 x 227 mm rectangular pipe

If the duct out version has been purchased it will contain ducting to install the product in this mode. Any additional ducting required to connect to the outside outlet can be purchased separately.



INSTALLATION VIDEO



Example of duct out mode configuration with lateral outlet



Installation in duct out mode to an outlet in the rear wall is also possible using optional ducting.



Example of duct out mode configuration with rear outlet

KIT0130427A | RE-CIRCULATING MODE CONVERSION KIT

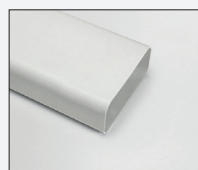
This kit enables you to convert a NikolaTesla supplied with the duct out version of this platform to a re-circulating (filtering) mode.



- Ceramic filters, 3 pieces
- Ceramic filter frame assembly
- Ceramic filter tray
- 90° - 94 x 227 mm rectangular bend
- 90° rectangular bend from vertical 94 x 227 mm to horizontal 50 x 227 mm
- 500 x 94 x 227 mm rectangular pipe
- 218 x 55 x 300 mm rectangular pipe
- Outlet connection to be fitted outside the baseboard, provided with chrome-plated trim profile
- 2 extension connections for >60 and >65 cabinet
- Outlet connection support
- Adhesive tape

Available for models NIKOLATESLA
ONE/ONE HP/ LIBRA/FLAME

DUCTING FOR DUCT-OUT VERSION



222x89x1000 mm
KIT0120991



222x89x500 mm
KIT0173527



Ø150x500 mm
KIT0120996



Ø150x1000mm
KIT0121000



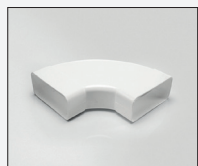
227x94x80mm
KIT0121001



15° 227x138x94
KIT0121002



Ø158x59mm
KIT0121003



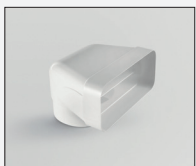
90° 227x288x94mm
KIT0121004



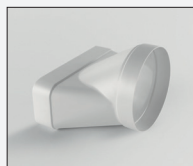
90° 227x94mm
KIT0121005



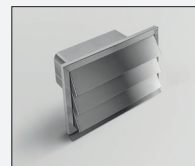
90° - Ø157
KIT0121006



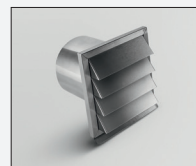
227x94 - Ø146mm
KIT0121007



227x94 - Ø153mm
KIT0121008



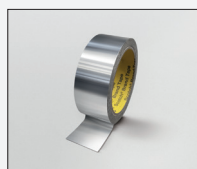
int 216x82
est 290x160 mm
KIT0121009



190x190 - Ø147mm
KIT0121010



227x94 mm
KIT0126810

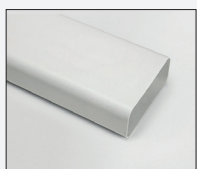


50 mm x 25 m
KIT0161453

DUCTING FOR RE-CIRCULATING VERSION



218x55x500 mm
KIT0121012



218x55x1000 mm
KIT0121013



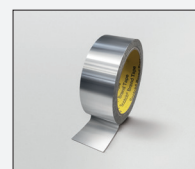
223x59x72 mm
KIT0121015



90° 218x55 mm
KIT0121016



218x55 mm
KIT0121017



50 mm x 25 m
KIT0161453



Deflector
under plinth
KIT0168750

CERAMIC ODOUR FILTER

The ceramic filter is a modular filter that can be thermally regenerated in the oven every 2/3 months at 200° for 45 minutes for up to 5 years. It offers for very high odour absorption efficiency and very high mechanical strength.



Use KIT0120952A for

NIKOLATESLA ONE
NIKOLATESLA ONE HP
NIKOLATESLA UNPLUGGED
NIKOLATESLA SWITCH GLOW
NIKOLATESLA SWITCH
NIKOLATESLA LIBRA
NIKOLATESLA FLAME

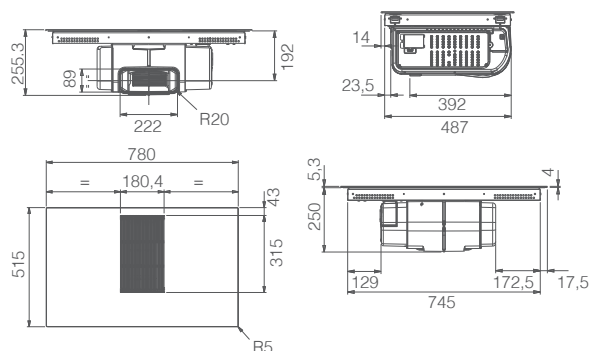


Use KIT0167755 for

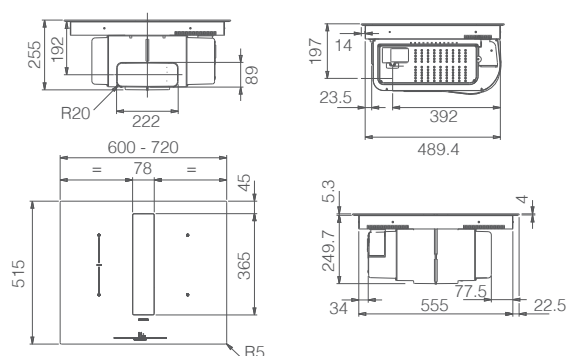
NIKOLATESLA FIT
NIKOLATESLA FIT XL
NIKOLATESLA 3Z
NIKOLATESLA ALPHA
NIKOLATESLA PRIME S
NIKOLATESLA PRIME S PLUS

TECHNICAL INFORMATION

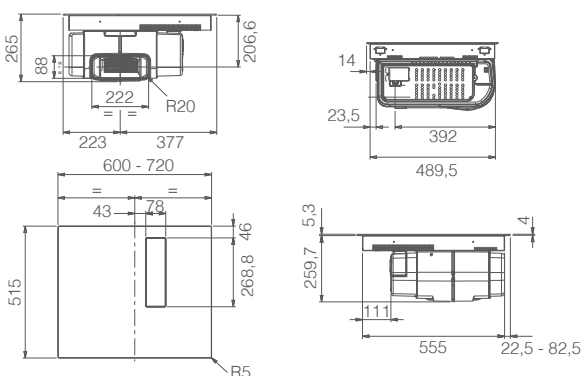
• NikolaTesla Alpha Duct-out



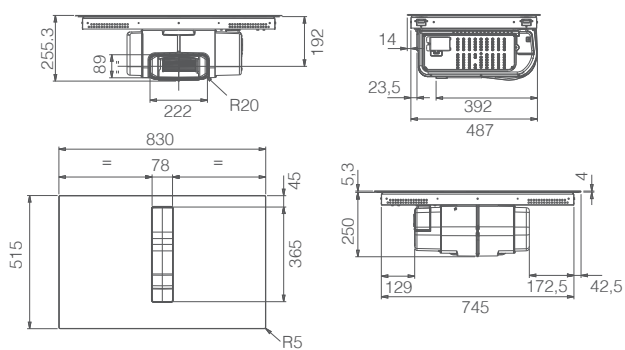
• NikolaTesla Fit Duct-out



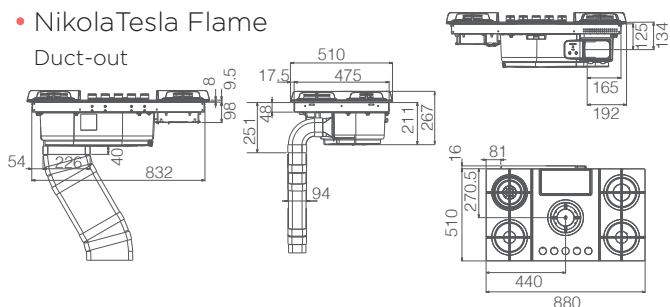
• NikolaTesla Fit 3Z Duct-out



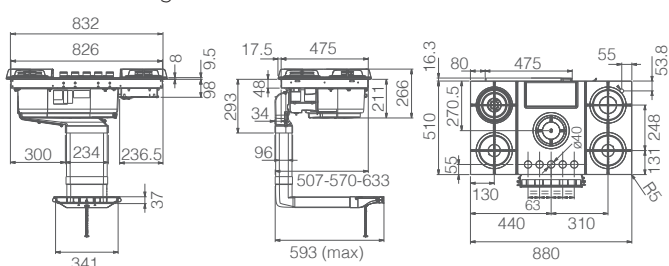
• NikolaTesla Fit XL Duct-out



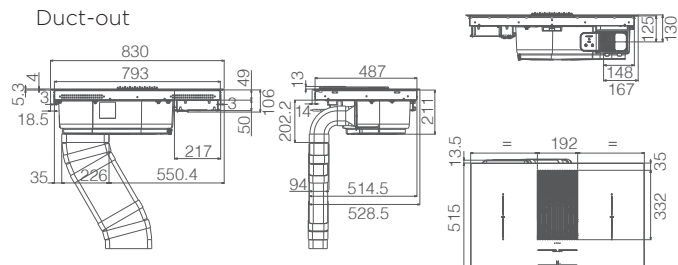
• NikolaTesla Flame Duct-out



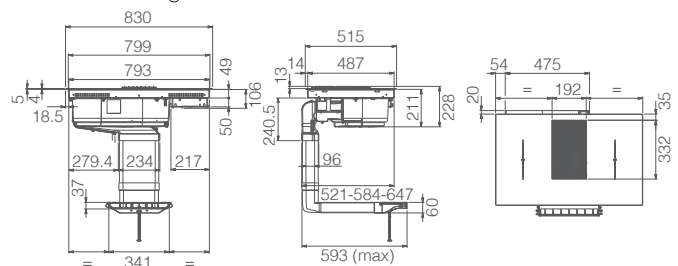
Re-circulating



• NikolaTesla Libra Duct-out

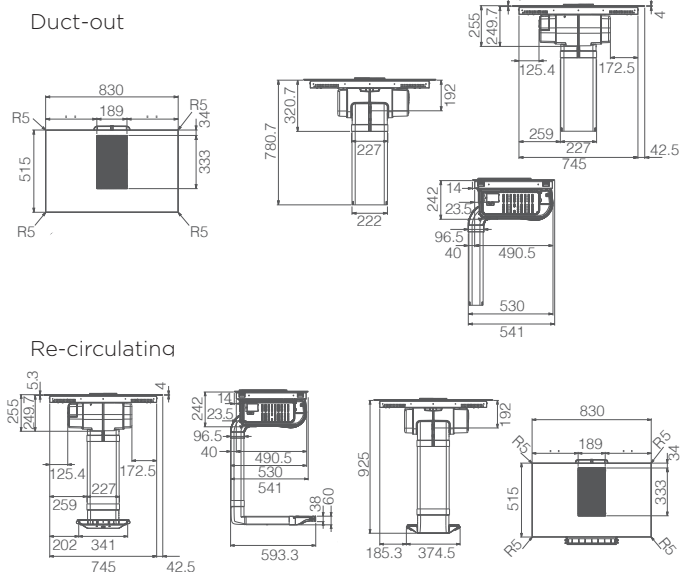


Re-circulating

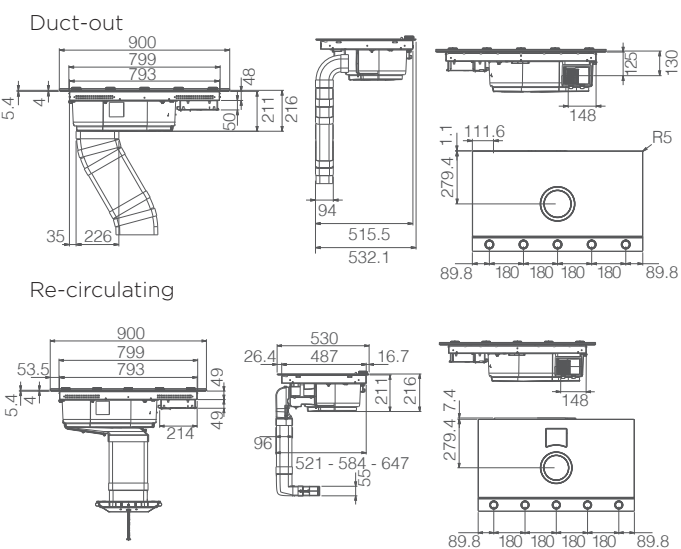


TECHNICAL INFORMATION

Duct-out



Duct-out



Technical drawing of a rectangular floor slab. The overall dimensions are 807mm by 492mm. The slab has a central rectangular opening with dimensions greater than 50mm by greater than 40mm. The drawing includes a cross-section view showing the slab thickness and a reinforcement detail showing a cross-section of the slab with a central opening and reinforcement bars.

Technical drawing of a rectangular floor slab. The overall dimensions are 560mm by 490mm. The slab has a central rectangular opening with dimensions of approximately 300mm by 200mm. The distance from the outer edge to the inner edge of the opening is at least 50mm on the top and bottom sides, and at least 40mm on the left and right sides. A cross-section detail is shown in the top left corner, indicating a hatched reinforcement layer on top of a solid concrete layer.

Technical drawing of a rectangular plate. The main drawing shows a rectangular plate with overall dimensions of 750mm by 490mm. The plate has a central rectangular cutout with dimensions of approximately 50mm by 40mm. A detail view in the top left corner shows a cross-section of the plate, indicating a thickness of 50mm.

Technical drawing of a rectangular frame assembly. The drawing shows a perspective view of a rectangular frame with a central opening. The dimensions are as follows:

- Overall width: 840mm
- Overall height: 487mm
- Inner width: >400mm
- Inner height: >400mm
- Frame thickness (top and bottom): >50mm
- Frame thickness (left and right): >50mm

The drawing includes a small inset showing a cross-section of the frame, indicating a hollow structure with a central void.

NikolaTesla can be installed with the glass on top of the worktop (standard installation) or flush fitted in to the worktop (see technical drawing in the installation instructions).

NIKOLATESLA DESIGN AWARDS



REALIZED BY ELICA TEAM
BARBARA PERSIGILLI
FRANCESCA POETA
 Graphic Design
 and Coordination

IN COLLABORATION WITH

ARCHÈ AGENCY - PESARO
 Scenic Art Direction
 Photorealistic 3D

This catalogue is of exclusive property of Elica spa.
 All rights are reserved. Any form of total or partial reproduction of catalogue is strictly forbidden.
 The printing process does not always permit a faithful reproduction of tones and materials.
 Elica reserves the right to modify the specifications and design of all products in this catalogue.