

## PRODUCT GUIDE









AIR IS PRECIOUS.  
THIS EVERYDAY AWARENESS, HAS DRIVEN ELICA'S DESIGN  
SENSE, SUPPORTED BY THE MOST ADVANCED TECHNOLOGY  
IN THE FIELD. ALL ELICA SERIES ARE ABLE TO MEET THE  
NEEDS RELATED TO THE DIFFERENT WAYS OF LIVING AND  
COOKING ALL AROUND THE WORLD.

# WHY ELICA?

The history of our brand began back in 1970 in Fabriano, Italy, where **our passion for design and quality** was born. An unmistakable style along with the meticulous studies of the air and its qualities, are our distinctive traits.

From the very beginning, we have been inspired by the principles of Italian Design, combining the most innovative technologies in the creation of our range hoods.

Over the years we have revolutionized the image of the hoods and the Elica brand can be found in homes all over the world. Our evolution has taken us into the world of cooking, providing unprecedented industry first solutions before anyone else that **never cease to amaze**. Our long history of cutting-edge design and technology has led to numerous patents, which have helped drive the future of appliances. At our global design center and the Elica Propulsion Laboratory, experts study air, moisture and heat, where they are researching and developing the products of tomorrow.

We are the market leader, producing 20.7 million pieces ranging from hoods to motors every year. Elica is represented world wide on five continents with manufacturing plants and commercial offices in Italy, Poland, Mexico, India, China and Russia.

**These are some of the Awards where our products have been recognized:**





# INDEX

## COOKTOPS WITH ASPIRATION SYSTEM



NIKOLATESLA SWITCH  
page 9

## RISERVA SERIES



EBS52SS1  
page 11



EBS51SS1  
page 12



EWS52SS1  
page 13



EBF52SS1  
page 14

## ISLAND HOODS



EASY  
page 16



SEASHELL  
page 16



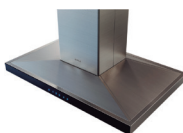
HAIKU IS & HAIKU IS COLORS  
page 18



HAIKU IS  
page 19



CINGOLI  
page 25



SALICE  
page 27



MAGGIORE  
page 26



LEONE IS  
page 33



VAVANO IS  
page 34

# INDEX

## WALL-MOUNT HOODS



HAIKU INOX & COLORS  
page 17



HAIKU  
page 19



CATANIA  
page 23



ORISTANO  
page 24



COMO  
page 25



LUGANO  
page 26



MEZZANO  
page 27



VARNA  
page 28



FOGLIA  
page 28



LEONE  
page 33



VAVANO  
page 34



CALABRIA  
page 35



TOBLINO 24"  
page 42



TOBLINO  
page 42



POTENZA  
page 43



BOLSENA  
page 44



VOLTERRA 24"  
page 44

## INSERT HOODS



PALERMO  
page 30



UMBRIA  
page 31



AREZZO  
page 34



TRENTO  
page 34



SCANNO  
page 37



ASTI  
page 46



ASTI 30  
page 46



# INDEX

## OUTDOOR HOOD



CAPRI  
page 40

## UNDERCABINET HOODS



ARIA  
page 29



MODENA  
page 30



CERVINIA  
page 35



ALLASIO  
page 41



NEMI  
page 41



FUSARO  
page 43



SORA  
page 45



GUBBIO  
page 45



TT  
page 47



BELLAGIO  
page 47

## CEILING MOUNT HOODS



ILLUSION  
page 20



HIGHLIGHT  
page 20

## DOWNDRAFT HOODS



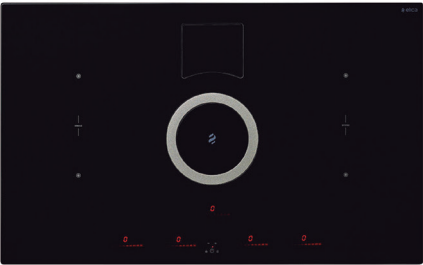
RISE  
page 31



# AIR COOKING

**NIKOLATESLA** is the first Elica exclusive Aspiration Cooktop, which combines functionality of two technologies: Induction + Ventilation System into one single appliance. No other cooking technology is faster than the induction elements, Nikolatesla Series makes a reality to boil 1L of water in less than 60 seconds. Elica's Air Cooking line offers all the benefits of the induction wonders: Safety, cleanliness, energy saving, PLUS the aspiration system of a powerful hood. Save time and space, uncover this elegant hi-tech design.





# NIKOLATESLA SWITCH

## INDUCTION COOKTOP

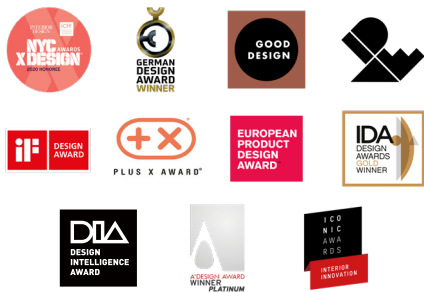
Model Numbers	ENS436BL
Wattage	440 W
Frequency	60 Hz
Voltage	208-240 V
Cooking Zones	4 zones of 7.1" x 7.9"
Bridge Zones	2
Heating Level	9 levels + booster

## ASPIRATION SYSTEM

Aspiration levels	3 speed + booster ventilation
Blower performance	400 CFM (4 speed + boost)
Noise (sones)	5.9 sones
Duct transition	3 1/4" x 10" Rectangular
Filters	6 layer dishwasher-safe anodized aluminum mesh
Recirculating Kit	3 - Ceramic Carbon Filters

# AIR COOKING

Size	36 1/2" W x 20 1/4" D x 8 1/4" H
Type Finish	Black glass
Installation Type	Ducted or recirculating Self rimming or flush mounted
Controls	Slider touch control





# RISERVA SERIES

## **Fresh drinks as an alluring lifestyle.**

Life is best when you improvise, but when it comes to your favorite beverages and wines it is better to be prepared and have them always handy!

Meet Elica's New Series of Undercabinet Beverage Centers and Wine Cellars, exquisitely designed to preserve them fresh to accompany the best moments of your life.





# EBS52SS1

## Beverage & Wine Center

### SINGLE DOOR DUAL ZONE

Width	24"
Dimension	23 13/32" W x 33 13/16" H x 23 5/8" D
Weight	128 lbs
Installation Type	Built-in and free standing
Volume	4.8 cu ft (135L)
Sound level	39 dBA
Door finish	304 stainless steel + tempered glass
Hinge Design	Concealed
Lighting	3 level white LED
Controls	Capacitive touch display with white numbers

## COOLING ZONE 1 - BEVERAGES

Total Capacity	72 cans (12 oz cans)
Temperature Range	34 to 50 °F
Shelving	2 adjustable slide-out Tempered glass shelves

## COOLING ZONE 2 - WINES

Total Capacity	14 bottles of wine (25 oz)
Temperature Range	40 to 64 °F
Shelving	1 full extension rack of beechwood with metal front trim

# RISERVA

Door Handle	Tubular
Door glass	Tinted dual pane, Low-e-Argon-Filled
Reversible door	Yes

## ELECTRICAL

Min. circuit required	15 A
AC Power	110- 120 V /60 Hz
Amperage	0.95 A
Plug Type	B
PRO Handle kit	KIT0175505



Others	Anti damping system Sabbath mode Beverage shelving made of tempered glass Premium beechwood wine racks Double panel glass door, UV coated 1 carbon filter
--------	--



EPC  
TECHNOLOGY



QUIET  
OPERATION



ECO-MODE



OPEN DOOR  
ALARM



CONCEALED  
HINGE



HIGH EFFICIENCY  
CARBON FILTERS



# EBS51SS1

## Beverage Center

### SINGLE DOOR SINGLE ZONE

Width	24"
Dimension	23 13/32" W x 33 13/16" H x 23 5/8" D
Weight	128 lbs
Installation Type	Built-in and free standing
Volume	4.8 cu ft (135L)
Sound Level	39 dBA
Door Finish	304 stainless steel + tempered glass
Hinge Design	Concealed
Lighting	3 level white LED
Controls	Capacitive touch display with white numbers

## COOLING ZONE 1 - BEVERAGES

Total Capacity	>120 cans (12 oz cans)
Temperature Range	34 to 65 °F
Shelving	3 Adjustable slide-out tempered glass shelves with metal front trim (without rollers)

# RISERVA

Door Handle	Tubular
Door glass	Tinted dual pane, Low-e-Argon-Filled
Reversible door	Yes

## ELECTRICAL

Min. circuit required	15 A
AC Power	110- 120 V /60 Hz
Amperage	0.95 A
Plug Type	B
PRO Handle kit	KIT0175505



Others	Anti damping system Sabbath mode Beverage shelving made of tempered glass Premium beechwood wine racks Double panel glass door, UV coated
--------	---



EPC  
TECHNOLOGY



QUIET  
OPERATION



ECO-MODE



OPEN DOOR  
ALARM



CONCEALED  
HINGE



HIGH EFFICIENCY  
CARBON FILTERS



# EWS52SS1

## Wine Cellar

### SINGLE DOOR DUAL ZONE

Width	24"
Dimension	23 13/32" W x 33 13/16" H x 23 5/8" D
Weight	128 lbs
Installation Type	Built-in and free standing
Volume	4.8 cu ft (135L)
Sound Level	39 dBA
Door Finish	304 stainless steel + tempered glass
Hinge Design	Concealed
Lighting	3 level white LED
Controls	Capacitive touch display with white numbers

## COOLING ZONE 1 - WHITE WINE

Total Capacity	16 bottles of wine (25 oz)
Temperature Range	40 to 50 °F
Shelving	2 full extension racks of beechwood with metal front trim

## COOLING ZONE 2 - RED WINE

Total Capacity	36 bottles of wine (25 oz)
Temperature Range	50 to 64 °F
Shelving	3 full extension rack of beechwood with metal front trim

# RISERVA

Door Handle	Tubular
Door glass	Tinted dual pane, Low-e-Argon-Filled
Reversible door	Yes

## ELECTRICAL

Min. circuit required	15 A
AC Power	110- 120 V /60 Hz
Amperage	0.95 A
Plug Type	B
PRO Handle Kit	KIT0175505



Others	Anti damping system Sabbath mode Beverage shelving made of tempered glass Premium beechwood wine racks Double panel glass door, UV coated
--------	---



EPC  
TECHNOLOGY



QUIET  
OPERATION



ECO-MODE



OPEN DOOR  
ALARM



CONCEALED  
HINGE



HIGH EFFICIENCY  
CARBON FILTERS





# EBFS52SS1

## Beverage & Wine Center

### FRENCH DOOR DUAL ZONE

Width	24"
Dimension	23 13/32" W x 34 13/16" H x 22 13/32" D
Weight	117 lbs
Installation Type	Built-in and free standing
Volume	4.8 cu ft (135L)
Sound Level	39 dBA
Door Finish	304 stainless steel + tempered glass
Hinge Design	Concealed
Lighting	3 level white LED
Controls	Capacitive touch display with white numbers

## COOLING ZONE 1 - BEVERAGES

Total Capacity	> 60 cans (12 oz)
Temperature Range	34 to 68 °F
Shelving	3 adjustable slide-out tempered glass shelves with metal front trim

## COOLING ZONE 2 - WINES

Total Capacity	21 bottles of wine (25 oz)
Temperature Range	34 to 68 °F
Shelving	6 pieces beechwood shelves with metal front trim

# RISERVA

Door Handle	Tubular
Door glass	Tinted dual pane, Low-e-Argon-Filled
Reversible door	No

## ELECTRICAL

Min. circuit required	15 A
AC Power	110- 120 V /60 Hz
Amperage	0.95 A
Plug Type	B
PRO Handle kit	KIT0175505 (2 kits needed for french door)



Others	Anti damping system Sabbath mode Beverage shelving made of tempered glass Premium beechwood wine racks Double panel glass door, UV coated
--------	---



EPC  
TECHNOLOGY



QUIET  
OPERATION



ECO-MODE



OPEN DOOR  
ALARM



CONCEALED  
HINGE



HIGH EFFICIENCY  
CARBON FILTERS



**Iconic** line hoods are uniquely Italian, with a focus on design that makes a statement in any home, providing captivating beauty, complemented by innovative materials and technology that promotes curiosity, emotion and conversation.



## EASY

ISLAND

<b>Model Numbers</b>	EES320SS, EES320WT
<b>Width</b>	20"
<b>Depth</b>	20"
<b>Color / Material</b>	Stainless steel / White
<b>Blower Performance</b>	355 CFM (3-speed + boost)
<b>Controls</b>	Electronic push control with perimetral light
<b>Lighting</b>	3 LED Lights
<b>Filter</b>	Aluminium mesh filter + Perimeter aspiration
<b>Installation Type</b>	Recirculating
<b>Installation Height</b>	For ceiling heights 6'10" - 11'8"
<b>Sones</b>	6.8 sones
<b>Others</b>	Timer
<b>KIT</b>	
Optional wall mounting bracket	KIT0121394
High ceiling extension	KIT01921



TOUCH CONTROL



PERIMETER ASPIRATION



LONG LIFE FILTER



CLEAN FILTER ALARM



REPLACE FILTER ALARM



LED LIGHT



## SEASHELL

ISLAND

<b>Model Numbers</b>	ESS432SS
<b>Width</b>	31 1/2"
<b>Depth</b>	31 1/2"
<b>Color / Material</b>	Mirror look stainless steel
<b>Blower Performance</b>	400 CFM (43-speed)
<b>Controls</b>	Remote control
<b>Lighting</b>	4 strip LED + LED disk
<b>Filter</b>	Aluminium grease filter + regenerable charcoal filter
<b>Installation Type</b>	Recirculating only
<b>Installation Height</b>	For ceiling height 6'11" - 11'1"
<b>Sones</b>	5.9 sones
<b>KIT</b>	
High ceiling extension	KIT0067590
Black remote control	KIT0121469
White remote control	KIT0121468



LONG LIFE FILTER



REMOTE CONTROL



DELAY SWITCH OFF





# HAIKU

WALL MOUNT

<b>Model Numbers</b>	EHK624SS, EHK636SS, EHK648SS
<b>Width</b>	24", 36", 48"
<b>Depth</b>	12 3/5" to 15"
<b>Color / Material</b>	Stainless steel
<b>Blower Performance</b>	600 CFM (3-speed + boost)
<b>Controls</b>	Sensitive touch control with backlight
<b>Lighting</b>	Strip LED
<b>Filter</b>	Sophisticated black iron grates + 6 layer mesh filter
<b>Installation Type</b>	Ducted or recirculating (kit sold separately)
<b>Installation Height</b>	For ceiling heights 7'3" - 9'10" (ducted) 7'3" - 10'1" (recirculating)
<b>Transition</b>	6" round
<b>Sones</b>	6.8 sones
<b>KIT</b>	
Recirculating Kit	CFC0141725AUL



LONG LIFE FILTER



CLEAN FILTER ALARM



REPLACE FILTER ALARM



TOTAL INTEGRATION



DEEP SILENCE



UNIQUE MATERIALS



# HAIKU COLOR

WALL MOUNT

<b>Model Numbers</b>	EHK636WH, EHK636BL
<b>Width</b>	36"
<b>Depth</b>	12 3/5" to 15"
<b>Color / Material</b>	Black glass / White KRION®
<b>Blower Performance</b>	600 CFM (3-speed + boost)
<b>Controls</b>	Sensitive touch control with backlight
<b>Lighting</b>	Strip LED
<b>Filter</b>	Sophisticated black iron grates + 6 layer mesh filter
<b>Installation Type</b>	Ducted or recirculating (kit sold separately)
<b>Installation Height</b>	For ceiling heights 7'3" - 9'10" (ducted) 7'3" - 10'1" (recirculating)
<b>Transition</b>	6" round
<b>Sones</b>	6.8 sones
<b>KIT</b>	
Recirculating Kit	CFC0141725AUL



LONG LIFE FILTER



CLEAN FILTER ALARM



REPLACE FILTER ALARM



TOTAL INTEGRATION



DEEP SILENCE



UNIQUE MATERIALS

\*White KRION® ecological material that has antibacterial properties and can be 100% recycled. Easy repair and cleaning due to the absence of porosity.





# HAIKU

## ISLAND

<b>Model Numbers</b>	EH1648SS, EH1670SS
<b>Width</b>	48", 70"
<b>Depth</b>	13"
<b>Color / Material</b>	Stainless steel
<b>Blower Performance</b>	600 CFM (3-speed + boost)
<b>Controls</b>	Sensitive touch control with backlight
<b>Lighting</b>	Strip LED
<b>Filter</b>	Sophisticated black iron grates + 6 layer mesh filter
<b>Installation Type</b>	Ducted or recirculating (kit sold separately)
<b>Installation Height</b>	For ceiling heights 7'11" - 9'11" (ducted) 7'11" - 10'1" (recirculating)
<b>Transition</b>	6" round
<b>Sones</b>	6.8 sones
<b>KIT</b>	
Recirculating Kit	CFC0141725AUL



LONG LIFE FILTER



CLEAN FILTER ALARM



REPLACE FILTER ALARM



TOTAL INTEGRATION



DEEP SILENCE



UNIQUE MATERIALS



# HAIKU COLOR

## ISLAND

<b>Model Numbers</b>	EH1648BL, EH1648WH
<b>Width</b>	48"
<b>Depth</b>	13"
<b>Color / Material</b>	Black glass / White KRION®
<b>Blower Performance</b>	600 CFM (3-speed + boost)
<b>Controls</b>	Sensitive touch control with backlight
<b>Lighting</b>	Strip LED
<b>Filter</b>	Sophisticated black iron grates + 6 layer mesh filter
<b>Installation Type</b>	Ducted or recirculating (kit sold separately)
<b>Installation Height</b>	For ceiling heights 7'11" - 9'11" (ducted) 7'11" - 10'1" (recirculating)
<b>Transition</b>	6" round
<b>Sones</b>	6.8 sones
<b>KIT</b>	
Recirculating Kit	CFC0141725AUL



LONG LIFE FILTER



CLEAN FILTER ALARM



REPLACE FILTER ALARM



TOTAL INTEGRATION



DEEP SILENCE



UNIQUE MATERIALS

\*Material ecológico KRION® blanco que tiene propiedades antibacterianas y puede ser 100% reciclado. Fácil reparación y limpieza gracias a la ausencia de porosidad.





# HAIKU

WALL MOUNT

<b>Model Numbers</b>	EHK613SS
<b>Width</b>	13"
<b>Depth</b>	12 3/5" to 15"
<b>Color / Material</b>	Stainless steel
<b>Blower Performance</b>	600 CFM (3-speed + boost)
<b>Controls</b>	Sensitive touch control with backlight
<b>Lighting</b>	Strip LED
<b>Filter</b>	Sophisticated black iron grates + 6 layer mesh filter
<b>Installation Type</b>	Ducted or recirculating (kit sold separately)
<b>Installation Height</b>	For ceiling heights 7'3" - 9'10" (ducted) 7'3" - 10'1" (recirculating)
<b>Transition</b>	6" round
<b>Sones</b>	6.8 sones
<b>Others</b>	Clean filter indicator

<b>KIT</b>	
Recirculating Kit	CFC0141725AUL



LONG LIFE  
FILTER



CLEAN  
FILTER ALARM



REPLACE  
FILTER ALARM



TOTAL  
INTEGRATION



DEEP  
SILENCE



UNIQUE  
MATERIALS



# HAIKU

ISLAND

<b>Model Numbers</b>	EHK613SS
<b>Width</b>	13"
<b>Depth</b>	13"
<b>Color / Material</b>	Stainless steel
<b>Blower Performance</b>	600 CFM (3-speed + boost)
<b>Controls</b>	Sensitive touch control with backlight
<b>Lighting</b>	Strip LED
<b>Filter</b>	Sophisticated black iron grates + 6 layer mesh filter
<b>Installation Type</b>	Ducted or recirculating (kit sold separately)
<b>Installation Height</b>	For ceiling heights 7'11" - 9'11" (ducted) 7'11" - 10'1" (recirculating)
<b>Transition</b>	6" round
<b>Sones</b>	6.8 sones
<b>Others</b>	Clean filter indicator

<b>KIT</b>	
Recirculating Kit	CFC0141725AUL



LONG LIFE  
FILTER



CLEAN  
FILTER ALARM



REPLACE  
FILTER ALARM



TOTAL  
INTEGRATION



DEEP  
SILENCE



UNIQUE  
MATERIALS



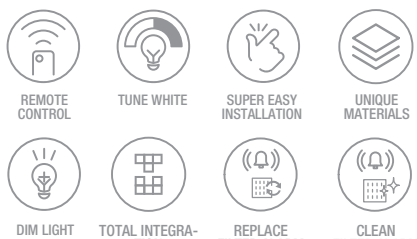




## ILLUSION

### CEILING

<b>Model Numbers</b>	EIL640WH, EIL640DW
<b>Width</b>	40"
<b>Depth</b>	19 11/16"
<b>Color / Material</b>	Metal white with white frame/ naked panel + stainless steel frame
<b>Blower Performance</b>	600 CFM (3-speed + boost)
<b>Controls</b>	Remote control
<b>Lighting</b>	Strip LED light with dimmable + tunable lighting
<b>Filter</b>	Aluminum mesh filter + perimetral aspiration
<b>Installation Type</b>	Ducted or recirculating (kit sold separately)
<b>Installation Height</b>	For ceiling heights up to 10'0"
<b>Transition</b>	6" round (multi directional)
<b>Sones</b>	6.8 sones
<b>Others</b>	Long strip LED Timer Panel ready
<b>KIT</b> Recirculating Kit	KIT0167875



## HIGHLIGHT

### CEILING

<b>Model Numbers</b>	EHL640WH, EHL640SS
<b>Width</b>	40"
<b>Depth</b>	22 11/25"
<b>Color / Material</b>	White glass with metal white frame / stainless steel
<b>Blower Performance</b>	600 CFM (3-speed + boost)
<b>Controls</b>	Remote control
<b>Lighting</b>	Strip LED light with dimmable + tunable lighting
<b>Filter</b>	Aluminum mesh filter + perimetral aspiration
<b>Installation Type</b>	Ducted or recirculating (kit sold separately)
<b>Installation Height</b>	For ceiling heights up to 10'0"
<b>Transition</b>	6" round (multi directional)
<b>Sones</b>	6.8 sones
<b>Others</b>	Long strip LED Timer White glass: gives the look as if it was all illuminated
<b>KIT</b> Recirculating Kit	KIT0167875





# DISEGNO

Elica's statement hoods, inspired by the traditional architecture, **Disegno** series combine performance and a bold design to complement the most exquisite kitchens. With seamless edges, mirrored stainless front rims and decorative banding & rivets deliver design to support those with a passion for food and gourmet cooking.



# CATANIA 36

WALL MOUNT

<b>Model Numbers</b>	ECTX36SS
<b>Width</b>	36"
<b>Depth</b>	22"
<b>Color / Material</b>	Stainless steel, front rim + decorative bands & rivets (stainless steel mirror look)
<b>Requires a Trento Insert</b>	ETR634SS, ETR134SI
<b>Blower Performance</b>	600 CFM/1200 CFM
<b>Controls</b>	Fully retractable rotating knobs with blue backlight
<b>Lighting</b>	2 LED lights
<b>Filter</b>	Dishwasher safe professional stainless steel baffle filters
<b>Installation Type</b>	Ducted installation only
<b>Transition</b>	10" round
<b>Sones</b>	7 sones / 8.5 sones
<b>KIT</b>	
Duct cover extension 6" tall	KIT0182785
Duct cover extension 18" tall	KIT0182786
Compatible with Trento KITS	



ELICA EASY MOUNTING



REAR OUTLET INSTALLATION



HUSH SYSTEM



SEAMLESS LOOK



GREASE COLLECTORS



HEAT GUARD



PROFESSIONAL PERFORMANCE



# CATANIA 48

WALL MOUNT

<b>Model Numbers</b>	ECTX48SS
<b>Width</b>	48"
<b>Depth</b>	22"
<b>Color / Material</b>	Stainless steel, front rim + decorative bands & rivets (stainless steel mirror look)
<b>Requires a Trento Insert</b>	ETR146SS
<b>Blower Performance</b>	1200 CFM
<b>Controls</b>	Fully retractable rotating knobs with blue backlight
<b>Lighting</b>	2 LED lights
<b>Filter</b>	Dishwasher safe professional stainless steel baffle filters
<b>Installation Type</b>	Ducted installation only
<b>Transition</b>	10" round
<b>Sones</b>	8.5 sones
<b>KIT</b>	
Duct cover extension 6" tall	KIT0182787
Duct cover extension 18" tall	KIT0182788
Compatible with Trento KITS	



ELICA EASY MOUNTING



REAR OUTLET INSTALLATION



HUSH SYSTEM



SEAMLESS LOOK



GREASE COLLECTORS



HEAT GUARD



PROFESSIONAL PERFORMANCE





# ORISTANO 36

WALL MOUNT

<b>Model Numbers</b>	EORX36SS
<b>Width</b>	36"
<b>Depth</b>	24"
<b>Color / Material</b>	Stainless steel, front rim + decorative bands & rivets (stainless steel mirror look)
<b>Requires Arezzo Insert</b>	EAR634SS, EAR134S4
<b>Blower Performance</b>	600 CFM/1200 CFM
<b>Controls</b>	Fully retractable rotating knobs with blue backlight
<b>Lighting</b>	2 LED lights
<b>Filter</b>	Dishwasher safe professional stainless steel baffle filters
<b>Installation Type</b>	Ducted installation only
<b>Transition</b>	10" round
<b>Sones</b>	7 sones / 8.5 sones
<b>KIT</b>	
Duct cover extension 6" tall	KIT0182781
Duct cover extension 18" tall	KIT0182782
Compatible with Trento KITS	



ELICA EASY MOUNTING



REAR OUTLET INSTALLATION



HUSH SYSTEM



SEAMLESS LOOK



GREASE COLLECTORS



HEAT GUARD



PROFESSIONAL PERFORMANCE



# ORISTANO 48

WALL MOUNT

<b>Model Numbers</b>	EORX48SS
<b>Width</b>	48"
<b>Depth</b>	24"
<b>Color / Material</b>	Stainless steel, front rim + decorative bands & rivets (stainless steel mirror look)
<b>Requires Arezzo Insert</b>	EAR140S4
<b>Blower Performance</b>	1200 CFM
<b>Controls</b>	Fully retractable rotating knobs with blue backlight
<b>Lighting</b>	4 LED lights
<b>Filter</b>	Dishwasher safe professional stainless steel baffle filters
<b>Installation Type</b>	Ducted installation only
<b>Transition</b>	10" round
<b>Sones</b>	8.5 sones
<b>KIT</b>	
Duct cover extension 6" tall	KIT0182783
Duct cover extension 18" tall	KIT0182784
Compatible with Trento KITS	



ELICA EASY MOUNTING



REAR OUTLET INSTALLATION



HUSH SYSTEM



SEAMLESS LOOK



GREASE COLLECTORS



HEAT GUARD



PROFESSIONAL PERFORMANCE



**Techne** Line brings everyday Italian living into your kitchen, featuring inspirational classic Italian designs, loaded with functional technologies that deliver convenience and high performance. Techne hoods come equipped with powerful blowers, hush sound suppression system, elegant glass touch controls and the possibility to set the desired illumination mood with long life LED lighting, where temperature and luminosity can be dimmed and adjusted.



## COMO

WALL MOUNT

<b>Model Numbers</b>	ECM630S3, ECM636S3
<b>Width</b>	30", 36"
<b>Depth</b>	19 11/16"
<b>Color / Material</b>	Stainless steel with controls in black glass
<b>Blower Performance</b>	600 CFM (3-speed + boost) with CRS System to limit CFM
<b>Controls</b>	Capacitive touch (glass)
<b>Lighting</b>	2 LED premium dimmable lights
<b>Filter</b>	Dishwasher-safe, anodized stainless steel microhole filter
<b>Installation Type</b>	Ducted or recirculating (kit sold separately)
<b>Installation Height</b>	For ceiling heights 7'6" - 10'2" (ducted) 7'10" - 10'5" (recirculating)
<b>Transition</b>	6" round
<b>Sones</b>	6.8 sones
<b>KIT</b>	
Recirculating Kit	KIT02766
Long chimney extension	KIT0100315
Charcoal filter replacement	KIT02667



## CINGOLI

ISLAND

<b>Model Numbers</b>	ECN636S3, ECN642S3
<b>Width</b>	36", 42"
<b>Depth</b>	25 1/4"
<b>Color / Material</b>	Stainless steel with controls in black glass
<b>Blower Performance</b>	600 CFM (3-speed + boost) with CRS System to limit CFM
<b>Controls</b>	Capacitive touch (glass)
<b>Lighting</b>	2 LED premium dimmable lights
<b>Filter</b>	Dishwasher-safe, anodized stainless steel microhole filter
<b>Installation Type</b>	Ducted or recirculating (kit sold separately)
<b>Installation Height</b>	For ceiling heights 7'6" - 9'8" (ducted) 7'6" - 10'1" (recirculating)
<b>Transition</b>	6" round
<b>Sones</b>	6.8 sones
<b>KIT</b>	
Recirculating Kit	KIT02665
Long chimney extension	KIT0100317
Charcoal filter replacement	KIT02667





# LUGANO

WALL MOUNT

<b>Model Numbers</b>	ELG630S3, ELG636S3
<b>Width</b>	30", 36"
<b>Depth</b>	19 7/8"
<b>Color / Material</b>	Stainless steel with controls in black glass
<b>Blower Performance</b>	600 CFM (3-speed + boost) with CRS System to limit CFM
<b>Controls</b>	Capacitive touch (glass)
<b>Lighting</b>	2 LED premium dimmable lights
<b>Filter</b>	Aluminum mesh filter + Perimeter aspiration
<b>Installation Type</b>	Ducted or recirculating (kit sold separately)
<b>Installation Height</b>	For ceiling heights 7'0" - 9'2" (ducted) 7'5" - 9'6" (recirculating)
<b>Transition</b>	6" round
<b>Sones</b>	6.8 sones
<b>KIT</b>	
Recirculating Kit	KIT0141925
Long chimney extension	KIT02785, KIT01935
Charcoal filter replacement	KIT0141918



CFM  
REDUCTION



TOP  
PERFORMANCE



TOUCH  
CONTROL



LED LIGHT



DIM LIGHT



HUSH  
SYSTEM



PERIMETER  
ASPIRATION



# MAGGIORE

WALL MOUNT

<b>Model Numbers</b>	EMG636S1, EMG642S1
<b>Width</b>	36", 42"
<b>Depth</b>	27 1/8"
<b>Color / Material</b>	Stainless steel with controls in black glass
<b>Blower Performance</b>	600 CFM (3-speed + boost) with CRS System to limit CFM
<b>Controls</b>	Capacitive touch (glass)
<b>Lighting</b>	4 LED premium dimmable lights
<b>Filter</b>	Dishwasher-safe stainless steel microhole filters
<b>Installation Type</b>	Ducted or recirculating (kit sold separately)
<b>Installation Height</b>	For ceiling heights 7'6" - 9'9" (ducted) 7'6" - 10'2" (recirculating)
<b>Transition</b>	6" round
<b>Sones</b>	6.8 sones
<b>KIT</b>	
Recirculating Kit	KIT02665
Long chimney extension	KIT0100317
Charcoal filter replacement	KIT02667



CFM  
REDUCTION



TOP  
PERFORMANCE



TOUCH  
CONTROL



LED LIGHT



DIM LIGHT



HUSH  
SYSTEM

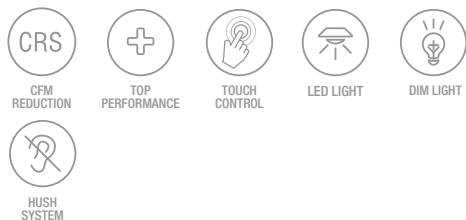




# MEZZANO

## WALL MOUNT

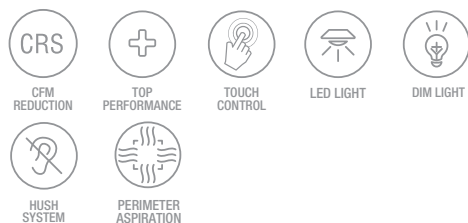
<b>Model Numbers</b>	EMZ630S3, EMZ636S3
<b>Width</b>	30", 36"
<b>Depth</b>	19 11/16"
<b>Color / Material</b>	Stainless steel with controls in black glass
<b>Blower Performance</b>	600 CFM (3-speed + boost) with CRS System to limit CFM
<b>Controls</b>	Capacitive touch (glass)
<b>Lighting</b>	2 LED premium dimmable lights
<b>Filter</b>	Dishwasher-safe stainless steel microhole filters
<b>Installation Type</b>	Ducted or recirculating (kit sold separately)
<b>Installation Height</b>	For ceiling heights 7'6" - 10'2" (ducted) 7'10" - 10'6" (recirculating)
<b>Transition</b>	6" round
<b>Sones</b>	6.8 sones
<b>KIT</b>	
Recirculating Kit	KIT0102875
Long chimney extension	KIT02785



# SALICE

## ISLAND

<b>Model Numbers</b>	ESL636S3, ESL642S3
<b>Width</b>	36", 42"
<b>Depth</b>	27 13/16"
<b>Color / Material</b>	Stainless steel with controls in black glass
<b>Blower Performance</b>	600 CFM (3-speed + boost) with CRS System to limit CFM
<b>Controls</b>	Capacitive touch (glass)
<b>Lighting</b>	4 LED premium dimmable lights
<b>Filter</b>	Aluminum mesh filter + Perimeter aspiration
<b>Installation Type</b>	Ducted or recirculating (kit sold separately)
<b>Installation Height</b>	For ceiling heights 7'9" - 9'11" (ducted) 7'9" - 10'4" (recirculating)
<b>Transition</b>	6" round
<b>Sones</b>	6.8 sones
<b>KIT</b>	
Recirculating Kit	KIT0141924
Long chimney extension	KIT0100317
Charcoal filter replacement	KIT0141918

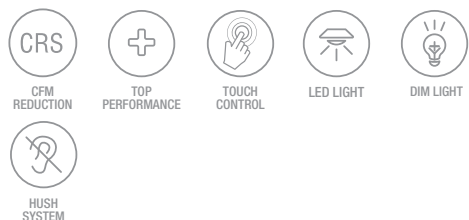




# VARNA

WALL MOUNT

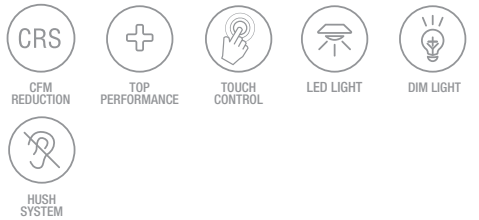
<b>Model Numbers</b>	EVR630S2, EVR636S2
<b>Width</b>	30", 36"
<b>Depth</b>	19 11/16"
<b>Color / Material</b>	Stainless steel with controls in black glass
<b>Blower Performance</b>	600 CFM (3-speed + boost) with CRS System to limit CFM
<b>Controls</b>	Capacitive touch (glass)
<b>Lighting</b>	2 LED premium dimmable lights
<b>Filter</b>	Dishwasher- safe stainless steel microhole filters
<b>Installation Type</b>	Ducted or recirculating (kit sold separately)
<b>Installation Height</b>	For ceiling heights 7'5" - 9'1" (ducted) 7'5" - 9'6" (recirculating)
<b>Transition</b>	6" round
<b>Sones</b>	6.8 sones
<b>KIT</b>	
Recirculating Kit	KIT02766
Long chimney extension	KIT02762



# FOGLIA

WALL MOUNT

<b>Model Numbers</b>	EFG630S1, EFG636S1
<b>Width</b>	30", 36"
<b>Depth</b>	19 11/16"
<b>Color / Material</b>	Stainless steel with controls in black glass
<b>Blower Performance</b>	600 CFM (3-speed + boost) with CRS System to limit CFM
<b>Controls</b>	Capacitive touch (glass)
<b>Lighting</b>	2 LED premium dimmable lights
<b>Filter</b>	Dishwasher-safe stainless steel microhole filters
<b>Installation Type</b>	Ducted or recirculating (kit sold separately)
<b>Installation Height</b>	For ceiling heights 7'5" - 9'2" (ducted) 7'5" - 9'6" (recirculating)
<b>Transition</b>	6" round
<b>Sones</b>	6.8 sones
<b>KIT</b>	
Recirculating Kit	KIT02766
Long chimney extension	KIT02784





## ARIA

UNDERCABINET

<b>Model Numbers</b>	EAI430SS, EAI436SS
<b>Width</b>	30", 36"
<b>Depth</b>	20"
<b>Color / Material</b>	Stainless steel with controls in black glass
<b>Blower Performance</b>	430 CFM (3-speed + boost) with CRS System to limit CFM
<b>Controls</b>	Capacitive touch (glass)
<b>Lighting</b>	2 LED premium dimmable lights
<b>Filter</b>	2 dishwasher-safe stainless steel baffle slot filters
<b>Installation Type</b>	Ducted or recirculating (kit sold separately)
<b>Transition</b>	3 1/4" x 10" top / Rear or 7" round top (sold separately)
<b>Sones</b>	6.1 sones
<b>KIT</b> Recirculating Kit <b>30"</b> : KIT02178, <b>36"</b> : KIT02179 Backdraft damper 7" round      KIT02723	



## MODENA

UNDERCABINET

<b>Model Numbers</b>	EMD530S3, EMD536S3
<b>Width</b>	30", 36"
<b>Depth</b>	19 5/8"
<b>Color / Material</b>	Stainless steel with controls in black glass
<b>Blower Performance</b>	600 CFM (3-speed + boost) with CRS System to limit CFM
<b>Controls</b>	Capacitive touch (glass)
<b>Lighting</b>	2 LED premium dimmable lights
<b>Filter</b>	Dishwasher-safe stainless steel microhole filters
<b>Installation Type</b>	Ducted or recirculating (kit sold separately)
<b>Transition</b>	3 1/4" x 10" rectangular (rear outlet) and 6" round (top outlet)
<b>Sones</b>	6.8 sones
<b>KIT</b> Recirculating Kit      KIT02667	





# UMBRIA

## INSERT

<b>Model Numbers</b>	EUM628SS, EUM634SS
<b>Width</b>	28", 34"
<b>Depth</b>	10 3/4"
<b>Color / Material</b>	Stainless steel
<b>Blower Performance</b>	600 CFM, 3-Speed Internal
<b>Controls</b>	Stainless Steel Push Buttons
<b>Lighting</b>	2 LED premium dimmable lights
<b>Filter</b>	Dishwasher-Safe, Anodized Aluminum, Mesh Filter + Perimeter Aspiration
<b>Installation Type</b>	Ducted or recirculating (kit sold separately)
<b>Transition</b>	6" round (top outlet)
<b>Sones</b>	6.8 sones

### KIT

Recirculating Kit	KIT02770
CFM Reduction Kit	KIT02748
Optional 30" Hood Liner	28":KIT02773
Optional 36" Hood Liner	28": KIT02774
CFM Reduction Kit	KIT0175561



TOP  
PERFORMANCE



HUSH  
SYSTEM



LED LIGHT



PERIMETER  
ASPIRATION



# PALERMO

## INSERT

<b>Model Numbers</b>	EPR628S1, EPR634SS
<b>Width</b>	28", 34"
<b>Depth</b>	10 3/4"
<b>Color / Material</b>	Stainless steel
<b>Blower Performance</b>	600 CFM (3-speed)
<b>Controls</b>	Stainless steel push button
<b>Lighting</b>	2 LED lights
<b>Filter</b>	Dishwasher-safe stainless steel baffle slot filters
<b>Installation Type</b>	Ducted or recirculating (kit sold separately)
<b>Transition</b>	6" round
<b>Sones</b>	6.8 sones

### KIT

Recirculating Kit	KIT02770
Hood liner 30"	KIT02773
Hood liner 36"	KIT02774
CFM Reduction Kit	KIT02748



CFM  
REDUCTION



HUSH  
SYSTEM



SEMI BAFFLE  
FILTER



LED LIGHT





# RISE

## DOWNDRAFT

Model Numbers	ERS630S1, ERS636S1
Width	30", 36"
Depth	12 1/2"
Color / Material	Stainless steel
Blower Performance	600 CFM (3-speed + boost)
Controls	External electronic rotating disk + LCD
Filter	Aluminum mesh filter + Perimeter aspiration
Installation Type	Ducted installation only
Transition	6" round (multi directional)
Sones	6.8 sones
KIT	
CFM Reduction kit	KIT02748



TOP  
PERFORMANCE



PERIMETER  
ASPIRATION



# ELICA PRO

For those inspired by the culinary arts and gourmet cooking, **Elica Pro** line range hoods deliver professional style cooking, with bold design coupled with unparalleled durability, quality and high performance that top chefs desire.



# LEONE

WALL MOUNT

Model Numbers		ELN630S2, ELN636SS ELN136S2, ELN142S2, ELN148SS
Width	30", 36", 42", 48"	
Depth	24"	
Color / Material	Stainless steel	
Blower Performance	30", 36": 600 CFM (4-speed) 36", 42", 48": 1200 CFM (4-speed)	
Controls	Fully retractable rotating knobs with blue backlight	
Lighting	2 LED lights	
Filter	Dishwasher-safe, professional stainless steel baffle	
Installation Type	Ducted or recirculating (kit sold separately)	
Installation Height	For ceiling heights 7'6"-10'0" (over electric cooking), 8'0"-10'0"(over gas cooking)	
Transition	8" round (top)	
Sones	7 sones / 8.5 sones	
KIT		
Long chimney extension	KIT02785	
1200 CFM external blower	KIT0153054	
1200 CFM Inline blower	KIT0154387	
Inline Blower Shell Kit	KIT0179549	
External Blower Shell Kit	KIT0179547	
CFM Reduction Kit	KIT0185752, KIT0185099	
Recirculating Kit		
Deflector	KIT0192759	
Round carbon filters	KIT0192765	



HUSH  
SYSTEM



HEAT GUARD



PROFESSIONAL  
PERFORMANCE



GREASE  
COLLECTORS



SEAMLESS  
LOOK



# LEONE IS

ISLAND

<b>Model Numbers</b>		ELI136S2, ELI142S2
<b>Width</b>	36", 42"	
<b>Depth</b>	27"	
<b>Color / Material</b>	Stainless steel	
<b>Blower Performance</b>	1200 CFM (4-speed)	
<b>Controls</b>	Fully retractable rotating knobs with blue backlight	
<b>Lighting</b>	4 LED lights	
<b>Filter</b>	Dishwasher-safe, professional stainless steel baffle	
<b>Installation Type</b>	Ducted or recirculating (kit sold separately)	
<b>Installation Height</b>	For ceiling heights 7'9" - 9'10" (over electric cooking) 8'3" - 9'10" (over gas cooking)	
<b>Transition</b>	8" round (top)	
<b>Sones</b>	8.5 sones	
<b>KIT</b>		
Long chimney extension Kit	KIT0100317	
1200 CFM external blower	KIT0153054	
1200 CFM Inline blower	KIT0154387	
Inline Blower Shell Kit	KIT0179549	
External Blower Shell Kit	KIT0179547	
CFM Reduction Kit	KIT0185099	
<b>Recirculating Kit</b>		
Deflector	KIT0192761	
Round carbon filters	KIT0192765	



HUSH  
SYSTEM



HEAT GUARD



PROFESSIONAL  
PERFORMANCE



GREASE  
COLLECTORS



SEAMLESS  
LOOK



# VAVANO

WALL MOUNT

<b>Model Numbers</b>	EVV636S1, EVV648S1
<b>Width</b>	36", 48"
<b>Depth</b>	24"
<b>Color / Material</b>	Stainless steel
<b>Blower Performance</b>	600 CFM (4-speed)
<b>Controls</b>	Fully retractable rotating knobs with blue backlight
<b>Lighting</b>	2 LED lights
<b>Filter</b>	Dishwasher-safe, professional stainless steel baffle
<b>Installation Type</b>	Ducted installation only
<b>Installation Height</b>	For ceiling heights 7'6"-10'6" (over electric cooking), 8'0"-10'6" (over gas cooking)
<b>Transition</b>	8" round (top)
<b>Sones</b>	7 sones
<b>KIT</b>	
1200 CFM Inline blower	KIT0154387
1200 CFM External blower	KIT0153054
Long Chimney Extension 13' 6"	KIT0146881-KIT02785
6" Round Transition	BH01UB
CFM Reduction Kit	KIT0185752



HUSH  
SYSTEM



HEAT GUARD



PROFESSIONAL  
PERFORMANCE



GREASE  
COLLECTORS



SEAMLESS  
LOOK



# VAVANO IS

ISLAND

<b>Model Numbers</b>	EVI642S1, EVI648S1
<b>Width</b>	42", 48"
<b>Depth</b>	24"
<b>Color / Material</b>	Stainless steel
<b>Blower Performance</b>	600 CFM (4-speed)
<b>Controls</b>	Fully retractable rotating knobs with blue backlight
<b>Lighting</b>	4 LED lights
<b>Filter</b>	Dishwasher-safe, professional stainless steel baffle
<b>Installation Type</b>	Ducted installation only
<b>Installation Height</b>	For ceiling heights 7'6" - 10'1" (over electric cooking), 8'0" - 10'1" (over gas cooking)
<b>Transition</b>	8" round (top)
<b>Sones</b>	7 sones
<b>KIT</b>	
Long Chimney Extension	KIT0145610
1200 CFM External blower	KIT0153054
1200 CFM Inline blower	KIT0154387
CFM Reduction Kit	KIT0185752
6" Round Transition	BH01UB



HUSH  
SYSTEM



HEAT GUARD



PROFESSIONAL  
PERFORMANCE



GREASE  
COLLECTORS



SEAMLESS  
LOOK



## CALABRIA

WALL MOUNT

<b>Model Numbers</b>	ECL630S4, ECL636SS, ECL136S4, ECL142S4, ECL148S4
<b>Width</b>	30", 36", 42", 48"
<b>Depth</b>	25"
<b>Color / Material</b>	Stainless steel
<b>Blower Performance</b>	30", 36": 600 CFM (4-speed) 36", 42", 48": 1200 CFM (4-speed)
<b>Controls</b>	Fully retractable rotating knobs with blue backlight
<b>Lighting</b>	30", 36", 42": 2 LED lights 48": 4 LED lights
<b>Filter</b>	Dishwasher-safe, professional stainless steel baffle
<b>Installation Type</b>	Ducted or recirculating (kit sold separately)
<b>Transition</b>	10" round (top)
<b>Sones</b>	7 sones/8.5 sones
<b>Others</b>	Stackable ducts
<b>KIT</b>	
Long chimney extension 6":	30": KIT02159, 36": KIT021598, 42": KIT02622, 48": KIT02164
Long chimney extension 12":	30": KIT02160, 36": KIT02161, 42": KIT02623, 48": KIT02165
Heat lamp w/2 75W bulbs kit :	30": KIT0155106, 36": KIT0155107, 42": KIT0155110, 48": KIT0155111
Stainless backsplash:	30": KIT0142864, 36": KIT0142867, 42": KIT0142868, 48": KIT0142870
1200 CFM external blower:	KIT0153054
1200 CFM Inline blower:	KIT0154387
External Blower Shell Kit:	KIT0179547
Inline Blower Shell Kit:	KIT0179549
CFM Reduction Kit	KIT0185752, KIT0185099
<b>Recirculating Kit</b>	
Deflector	KIT0192763
Round carbon filters	KIT0192765



## CERVINIA

UNDERCABINET

<b>Model Numbers</b>	ECV630S3, ECV636S3
<b>Width</b>	30", 36"
<b>Depth</b>	23"
<b>Color / Material</b>	Stainless steel
<b>Blower Performance</b>	600 CFM (4-speed)
<b>Controls</b>	Fully retractable rotating knobs with blue backlight
<b>Lighting</b>	2 LED lights
<b>Filter</b>	Dishwasher-safe, professional stainless steel baffle
<b>Installation Type</b>	Ducted installation only
<b>Transition</b>	3 1/4 X 10" (top and rear)
<b>Sones</b>	7 sones
<b>Others</b>	Stackable ducts
<b>KIT</b>	
Long chimney extension 6"	30": KIT02159 36": KIT02158
Long chimney extension 12"	30": KIT02160 36": KIT02161
Stainless backsplash	30": KIT0142864 36": KIT0142867
Inline Blower Kit	KIT0154387
External Blower Kit	KIT0153054
CFM Reduction Kit	KIT0185097



HUSH  
SYSTEM



HEAT GUARD



PROFESSIONAL  
PERFORMANCE



GREASE  
COLLECTORS



SEAMLESS  
LOOK



HUSH  
SYSTEM



HEAT GUARD



PROFESSIONAL  
PERFORMANCE



GREASE  
COLLECTORS



SEAMLESS  
LOOK





# AREZZO

INSERT

<b>Model Numbers</b>		EAR628S4, EAR634SS EAR134S4, EAR140S4, EAR146S4
<b>Width</b>		28", 34", 40", 46"
<b>Depth</b>		22"
<b>Color / Material</b>		Stainless steel
<b>Blower Performance</b>		28", 34": 600 CFM (4-speed) 34", 40", 46": 1200 CFM (4-speed)
<b>Controls</b>		Fully retractable rotating knobs with blue backlight
<b>Lighting</b>		28" 34": 2 LED lights 40", 46": 4 LED lights
<b>Filter</b>		Dishwasher-safe, professional stainless steel baffle
<b>Installation Type</b>		Ducted or recirculating (kit sold separately)
<b>Transition</b>		10" round (top)
<b>Sones</b>		7 sonos / 8.5 sonos
<b>KIT</b>		
1200 CFM external blower		KIT0153054
1200 CFM inline blower		KIT0154387
Inline Blower Shell Kit		KIT0179549
External Blower Shell Kit		KIT0179547
CFM Reduction Kit		KIT0185752, KIT0185099
<b>Recirculating Kit</b>		
Deflector		KIT0192763
Round carbon filters		KIT0192765



HUSH  
SYSTEM



HEAT GUARD



PROFESSIONAL  
PERFORMANCE



GREASE  
COLLECTORS



SEAMLESS  
LOOK



# TRENTO

INSERT

<b>Model Numbers</b>		ETR628SS, ETR634SS, ETR134S1, ETR146SS
<b>Width</b>		28", 34", 46"
<b>Depth</b>		18"
<b>Color / Material</b>		Stainless steel
<b>Blower Performance</b>		28", 34": 600 CFM (4-speed) 34", 46": 1200 CFM (4-speed)
<b>Controls</b>		Fully retractable rotating knobs with blue backlight
<b>Lighting</b>		2 LED lights
<b>Filter</b>		Dishwasher-safe, professional stainless steel baffle
<b>Installation Type</b>		Ducted or recirculating (kit sold separately)
<b>Transition</b>		10" round (top)
<b>Sones</b>		7 sonos / 8.5 sonos
<b>KIT</b>		
1200 CFM external blower		KIT0153054
1200 CFM inline blower		KIT0154387
Inline Blower Shell Kit		KIT0179549
External Blower Shell Kit		KIT0179547
CFM Reduction Kit		KIT0185752, KIT0185099
<b>Recirculating Kit</b>		
Deflector		KIT0192763
Round carbon filters		KIT0192765



HUSH  
SYSTEM



HEAT GUARD



PROFESSIONAL  
PERFORMANCE



GREASE  
COLLECTORS



SEAMLESS  
LOOK



# SCANNO

## INSERT

<b>Model Numbers</b>	ESC628SS, ESC134SS
<b>Width</b>	28", 34"
<b>Depth</b>	15 5/8"
<b>Color / Material</b>	Stainless steel
<b>Blower Performance</b>	28": 600 CFM (4-speed) 34": 1200 CFM (4-speed)
<b>Controls</b>	Fully retractable rotating knobs with blue backlight
<b>Lighting</b>	2 LED lights
<b>Filter</b>	Dishwasher-safe, professional stainless steel baffle
<b>Installation Type</b>	Ducted or recirculating (kit sold separately)
<b>Transition</b>	10" round (top)
<b>Sones</b>	7 sones / 8.5 sones
<b>KIT</b>	
1200 CFM External blower	KIT0153054
1200 CFM Inline blower	KIT0154387
10" to 8" transition Kit	KIT0154387
Inline Blower Shell Kit	KIT0179549
External Blower Shell Kit	KIT0179547
CFM Reduction Kit	KIT0185752, KIT0185099
<b>Recirculating Kit</b>	
Deflector	KIT0192763
Round carbon filters	KIT0192765



HUSH  
SYSTEM



HEAT GUARD



PROFESSIONAL  
PERFORMANCE



GREASE  
COLLECTORS



SEAMLESS  
LOOK



Perfect BBQ are the results of a good combination between a grill and a powerful exterior hood. Our **Outdoor** line includes stainless steel grade 304 weather resistant materials, LED light and extra depth for better fume capturing, and it is even extendable with a spacer.



# CAPRI

WALL MOUNT

<b>Model Numbers</b>	ECP136SS, ECP148SS
<b>Width</b>	36", 48"
<b>Depth</b>	32"
<b>Color / Material</b>	Corrosion resistant stainless steel
<b>Blower Performance</b>	Internal or external 1200 CFM (4-speed) sold separately
<b>Controls</b>	Fully retractable rotating knobs with blue backlight
<b>Lighting</b>	36": 2 LED lights, 48": 4 LED lights
<b>Filter</b>	Dishwasher-safe, professional stainless steel angled baffle filters
<b>Installation Type</b>	Ducted installation only
<b>Transition</b>	10" round (top)
<b>Sones</b>	8.5 sones
<b>Others</b>	Stackable duct cover
<b>KIT</b>	
External blower kit 1200 CFM	
8" or 10" duct size compatible:	KIT0153054
Inline blower kit 1200 CFM	
8" or 10" duct size compatible:	KIT0154387
1200 CFM Internal blower:	
Spacer kit 3" deep	<b>36"</b> : KIT0153304, <b>48"</b> : KIT0153305
Ductcover kit 6"	<b>36"</b> : KIT0156637, <b>48"</b> : KIT0156641
Ductcover kit 12"	<b>36"</b> : KIT0156645, <b>48"</b> : KIT0156649



HEAT GUARD



PROFESSIONAL  
PERFORMANCE



GREASE  
COLLECTORS



SEAMLESS  
LOOK



# COMFORT

The **Comfort** line of range hoods feature highly popular Italian design equipped with a core set of features that delivers functionality, performance, easy installation system and overall a very high level of value.





# ALLASIO

UNDERCABINET

<b>Model Numbers</b>	EAL330S1, EAL336S1
<b>Width</b>	30", 36"
<b>Depth</b>	20"
<b>Color / Material</b>	Stainless steel
<b>Blower Performance</b>	300 CFM (3-speed)
<b>Controls</b>	Backlit electronic push controls
<b>Lighting</b>	2 LED lights
<b>Filter</b>	Dishwasher-safe anodized aluminum mesh
<b>Installation Type</b>	Ducted or recirculating (kit sold separately)
<b>Transition</b>	3 1/4" x 10" top / Rear or 7" round top (sold separately)
<b>Sones</b>	5.2 sones
<b>KIT</b>	
Recirculating Kit	<b>30"</b> : KIT02178, <b>36"</b> : KIT02179
Non return valve	<b>30"</b> , <b>36"</b> : KIT02723
Upgrade Filter Kit	<b>30"</b> : GRI0131086A <b>36"</b> : GRI0131087A



LED LIGHT



3X LAYER  
MESH FILTER



# NEMI

UNDERCABINET

<b>Model Numbers</b>	ENM230S1, ENM236S1
<b>Width</b>	30", 36"
<b>Depth</b>	18 5/8"
<b>Color / Material</b>	Stainless steel
<b>Blower Performance</b>	280 CFM (3-speed)
<b>Controls</b>	Backlit electronic push button
<b>Lighting</b>	2 LED lights
<b>Filter</b>	Dishwasher-safe anodized aluminum mesh
<b>Installation Type</b>	Ducted or recirculating (kit sold separately)
<b>Transition</b>	3 1/4" x 10" top / Rear or 7" round top (sold separately)
<b>Sones</b>	4.9 sones
<b>KIT</b>	
Recirculating Kit	KIT0140997
Non return valve 7"	KIT02723
Duct transition 7"	KIT02722



LED LIGHT



3X LAYER  
MESH FILTER



# TOBLINO 24

WALL MOUNT

Model Numbers	ETB424SS
Width	24"
Depth	19 11/16"
Color / Material	Stainless steel
Blower Performance	400 CFM (3-speed)
Controls	Backlit electronic push button
Lighting	2 LED lights
Filter	Dishwasher-safe anodized aluminum mesh
Installation Type	Ducted or recirculating (kit sold separately)
Installation Height	For ceiling heights 6'11" - 8'7" (ducted) 7'0" - 8'11" (recirculating)
Transition	6" round
Sones	5.9 sones
<b>KIT</b> Recirculating Kit KIT0102875 Long chimney extension KIT02785, KIT01935 CFM Reduction Kit KIT0175561 Upgrade Filter Kit GF04YB	



LED LIGHT



3X LAYER  
MESH FILTER



# TOBLINO

WALL MOUNT

Model Numbers	ETB430S3, ETB436S3
Width	30", 36"
Depth	19 11/16"
Color / Material	Stainless steel
Blower Performance	400 CFM (4 -speed)
Controls	Multiple backlight color touch controls
Lighting	2 LED lights (2 levels)
Filter	Dishwasher-safe anodized aluminum mesh
Installation Type	Ducted or recirculating
Installation Height	For ceiling heights 6'11" - 8'7" (ducted) 7'0" - 8'11" (recirculating)
Transition	6" round
Sones	5.9 sones
<b>KIT</b> Recirculating Kit KIT0102875 Long chimney extension KIT02785, KIT01935 CFM Reduction kit KIT0175561 Upgrade Filter Kit GF04YB	



LED LIGHT



3X LAYER  
MESH FILTER



# POTENZA

WALL MOUNT

<b>Model Numbers</b>	EPT430S3, EPT436S3
<b>Width</b>	30", 36"
<b>Depth</b>	19 5/8"
<b>Color / Material</b>	Stainless steel
<b>Blower Performance</b>	400 CFM (4 speed)
<b>Controls</b>	Multiple backlight color touch controls
<b>Lighting</b>	2 LED lights (2 levels)
<b>Filter</b>	Dishwasher-safe anodized aluminum mesh
<b>Installation Type</b>	Ducted or recirculating (kit sold separately)
<b>Installation Height</b>	For ceiling heights 6' 9"- 8'8" (ducted), 7'0"-9'0" (recirculating)
<b>Transition</b>	6" round
<b>Sones</b>	5.9 sones
<b>KIT</b>	
Recirculating Kit	KIT0102875
Non return valve	KIT0100315, KIT01609/1
Upgrade Filter Kit	GF04YB



LED LIGHT



3X LAYER  
MESH FILTER



# FUSARO

UNDERCABINET

<b>Model Numbers</b>	EF5130S1
<b>Width</b>	30"
<b>Depth</b>	18 5/8"
<b>Color / Material</b>	Stainless steel
<b>Blower Performance</b>	190 CFM (2-speed)
<b>Controls</b>	Rocker Switch
<b>Lighting</b>	Incandescent lamp (not included)
<b>Filter</b>	Dishwasher-safe aluminum mesh
<b>Installation Type</b>	Ducted or recirculating (kit sold separately)
<b>Transition</b>	3 1/4" x 10" top / rear or 7" round top (sold separately)
<b>Sones</b>	4.1 sones
<b>KIT</b>	
Duct transition Kit	KIT02722
Backdraft damper Kit	KIT02723
Non return valve	KIT02724



3X LAYER  
MESH FILTER



# BOLSENA

Wall Mount

<b>Model Numbers</b>	EBS630SS, EBS636SS
<b>Width</b>	30", 36"
<b>Depth</b>	19 11/16"
<b>Color / Material</b>	Stainless steel
<b>Blower Performance</b>	600 CFM (4-speed)
<b>Controls</b>	Multiple backlight color touch controls
<b>Lighting</b>	2 LED lights (2 levels)
<b>Filter</b>	Dishwasher-Safe, Stainless Steel Baffle Slot Filters
<b>Installation Type</b>	Ducted or recirculating (kit sold separately)
<b>Transition</b>	6" round (top)
<b>Sones</b>	6.8 sones
<b>KIT</b>	
Chimney extension Kit	KIT02762
Recirculating Kit	KIT02766



CFM  
REDUCTION



HUSH  
SYSTEM



SEMI BAFFLE  
FILTER



LED LIGHT



# VOLTERRA 24

WALL MOUNT

<b>Model Numbers</b>	EVL424SS, EVL430S2, EVL436S2
<b>Width</b>	24", 30", 36"
<b>Depth</b>	19 5/8"
<b>Color / Material</b>	Stainless steel
<b>Blower Performance</b>	400 CFM (3-speed)
<b>Controls</b>	Backlit electronic push button
<b>Lighting</b>	2 LED lights
<b>Filter</b>	Dishwasher-safe anodized aluminum mesh
<b>Installation Type</b>	Ducted or recirculating (kit sold separately)
<b>Installation Height</b>	For ceiling heights 7'5" - 9'1" (ducted) 7'5" - 9'6" (recirculating)
<b>Transition</b>	6" round (top)
<b>Sones</b>	5.9 sones
<b>KIT</b>	
Recirculating Kit	KIT02766
Long chimney extension Kit	KIT02762
CFM reduction Kit	KIT0175561
Upgrade Filter Kit	GFO4YB



LED LIGHT



3X LAYER  
MESH FILTER



## GUBBIO

UNDERCABINET

<b>Model Numbers</b>	EGB224SS
<b>Width</b>	24"
<b>Depth</b>	18 7/8"
<b>Color / Material</b>	Stainless steel
<b>Blower Performance</b>	250 CFM (3-speed)
<b>Controls</b>	Mechanical Slider
<b>Lighting</b>	2 LED lights
<b>Filter</b>	Diswasher-safe anodized aluminum mesh
<b>Installation Type</b>	Ducted or recirculating (kit sold separately)
<b>Transition</b>	3 1/4" x 10" top or rear
<b>Sones</b>	4.6 sones
<b>KIT</b>	
Optional recirculating Kit	KIT0140997
Non return valve 7"	KIT02723
Duct transition 7"	KIT02722



SEMI BAFFLE  
FILTER



LED LIGHT



## SORA

UNDERCABINET

<b>Model Numbers</b>	ESR430S1, ESR436S1
<b>Width</b>	30", 36"
<b>Depth</b>	23"
<b>Color / Material</b>	Stainless steel
<b>Blower Performance</b>	400 CFM (2-speed)
<b>Controls</b>	Rocker switches
<b>Lighting</b>	2 LED lights
<b>Filter</b>	Dishwasher-safe stainless steel baffle slot
<b>Installation Type</b>	Ducted or recirculating (kit sold separately)
<b>Transition</b>	3 1/4" x 10" top or rear
<b>Sones</b>	5.9 sones
<b>KIT</b>	
Recirculating Kit	KIT02770
CFM reduction Kit	KIT0175561



SEMI BAFFLE  
FILTER



LED LIGHT





# ASTI

## INSERT

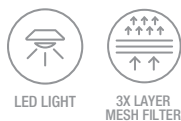
<b>Model Numbers</b>	EAS422SS, EAS428S1
<b>Width</b>	22", 28"
<b>Depth</b>	10 3/4"
<b>Color / Material</b>	Stainless steel
<b>Blower Performance</b>	400 CFM (3-speed)
<b>Controls</b>	Backlit electronic push controls
<b>Lighting</b>	2 LED lights
<b>Filter</b>	Dishwasher-safe Anodized Aluminum Mesh
<b>Installation Type</b>	Ducted or recirculating (kit sold separately)
<b>Transition</b>	6" round (top)
<b>Sones</b>	5.9 sones
<b>KIT</b>	
Recirculating Kit	KIT02770
CFM reduction Kit	KIT0175561
30" Hood liner	<b>28":</b> KIT02773
36" Hood liner	<b>28":</b> KIT02774



# ASTI 30

## INSERT

<b>Model Numbers</b>	EAS430SS
<b>Width</b>	30"
<b>Depth</b>	10 3/4"
<b>Color / Material</b>	Stainless steel
<b>Blower Performance</b>	400 CFM (3-speed)
<b>Controls</b>	Mechanical push button
<b>Lighting</b>	2 LED lights
<b>Filter</b>	Stainless steel mesh
<b>Installation Type</b>	Ducted or recirculating (kit sold separately)
<b>Transition</b>	6" round (top)
<b>Sones</b>	5.9 sones
<b>KIT</b>	
Recirculating Kit	KIT02770
CFM reduction Kit	KIT0175561





## TT

### UNDERCABINET

<b>Model Numbers</b>	ETT424S1, ETT430SS, ETT436SS
<b>Width</b>	24", 30", 36"
<b>Depth</b>	11" - 17"
<b>Color / Material</b>	Stainless steel
<b>Blower Performance</b>	400 CFM (3-speed)
<b>Controls</b>	Hidden electronic touch controls
<b>Lighting</b>	2 LED lights
<b>Filter</b>	Diswasher-safe anodized aluminum mesh
<b>Installation Type</b>	Ducted or recirculating (kit sold separately)
<b>Transition</b>	6" round (top)
<b>Sones</b>	5.9 sones
<b>KIT</b>	
Recirculating Kit	CFC0038668
Backdraft damper Kit	KIT02748
6" round plastic deflector	DF01EA



LED LIGHT



3X LAYER  
MESH FILTER



## BELLAGIO

### UNDERCABINET

<b>Model Numbers</b>	EBL430S1, EBL436S1
<b>Width</b>	30", 36"
<b>Depth</b>	20"
<b>Color / Material</b>	Stainless steel
<b>Blower Performance</b>	430 CFM (3-speed + boost) with CRS System to limit CFM
<b>Controls</b>	Multiple backlight color touch controls
<b>Lighting</b>	2 LED lights
<b>Filter</b>	Dishwasher-safe, anodized aluminum mesh
<b>Installation Type</b>	Ducted or recirculating (kit sold separately)
<b>Transition</b>	3 1/4" x 10" top / rear or 7" round top (sold separately)
<b>Sones</b>	6.1 sones
<b>KIT</b>	
Recirculating Kit	<b>30":</b> KIT02178, <b>36":</b> KIT02179
Valve damper Kit	KIT02723



CFM  
REDUCTION



LED LIGHT



3X LAYER  
MESH FILTER



HEAT GUARD

# ELICA'S EXCLUSIVE FEATURES



STOP & GO

## COOKTOP

Pause all the features in use on the hob, to later restore them back to what was previously set.



BRIDGE ZONES

## COOKTOP

Homogeneous cooking: cooktop surface adapts to the type of pot being used.



POT DETECTOR

## COOKTOP

Turns off cooktop when zone is not being used and turns on when pot is placed.



WARMING MODE

## COOKTOP

Designed for a low temperature cooking, ideal for heating liquids without worrying about the over-heating. Keeps prepared food warm, while other foods are still cooking.



AIRMATIC

## COOKTOP

Once the Airmatic function is activated, the product's intelligent sensor system detects the quantity - but above all the quality - of the fumes produced by the type of cooking and sets the most suitable aspiration power.



EASY TO MAINTAIN

## COOKTOP

All the components, such as the grease and odour filters, can be easily accessed and removed so they can be washed or rapidly replaced. Making it a low-maintenance product.



TIMER

## COOKTOP

Set the cooking time and start the countdown. At the end the cooking area will be automatically switched off and a beep will sound. You can set independent timers on more than one area at the same time.



DELAY SWITCH OFF

## COOKTOP

A smart timer feature allows you to set the automatic switch-off of the product after a predetermined time. Delayed shutdown may be used in order to leave the hood on even after cooking, so to fully remove stubborn odors and residual humidity.



RECALL

## COOKTOP

If the hob is accidentally switched off, the Recall feature is activated within 6 seconds: just one touch is all it takes to reset all of the previously set features, on all cooking zones and the extraction system.



TEMPERATURE MANAGER

## COOKTOP

The cooktop can be used with three programs (42, 72 or 92 degrees) to always ensure a perfect cooking.



CHILD LOCK

## COOKTOP

This avoids that the cooking or extraction areas are not accidentally switched on. The function can be enabled when the product is switched on but the cooking areas and extraction are switched off.



DEEP SILENCE

An exclusive sound deadening technology that utilizes a patented filter design, which substantially eliminates air turbulence and ultimately reduce sound levels.



REMOTE CONTROL

ADA compliant Remote Control provides added convenience to the user, as well as full function access for those with limited mobility.



TOUCH CONTROL

Multifunction electronic touch control behind sleek black glass and illuminate soft blue when activated.



LED LIGHT

Expected lifetime of over 20,000 hours, represents the most remarkable advantage of LED light bulbs.



TUNE WHITE

Choose preferred shade of white to create the right atmosphere. The Kelvin degrees regulation starts from a very warm tone up to a cold color.



HEAT GUARD

Senses extreme temperatures (>158 °F) and automatically adjusts the blower speed to HIGH.

# ELICA'S EXCLUSIVE FEATURES



LONG LIFE  
FILTER

Air filter that can be regenerated and keeps characteristics for up to 3 years, avoiding unnecessary replacements and waste. It has a level of efficiency of around 60%.



MAINTENANCE  
ALARM

An indicator light that alerts the user when grease and odor filters are about to reach maximum saturation. therefore, it's easy to always know when it's time to wash or replace them in order to keep the appliance clean and operating properly over time.



SEMI BAFFLE  
FILTER

A baffle shapes stainless steel filter with mesh backing allows air to pass but blocks grease, which drops into the high capacity baffle cavities.



3X LAYER  
MESH FILTER

Aluminum mesh filters are steps above competition, featuring triple-layered, anodized aluminum that is woven into a highly dense mesh.



PERIMETER  
ASPIRATION

The technology draws air through narrowed channel around a face plate, which increases suction, without increasing blower speed or energy consumption.



GREASE  
COLLECTORS

Professional grade Stainless Steel Baffle Filters designed for high airflow cooking, trap volumes of grease which are collected in trays for easy removal and cleaning.



CFRM  
REDUCTION

Enables user to reduce directly the maximum blower CFM, to meet local code requirements.



REMOTE  
CONTROL

ADA compliant Remote Control provides added convenience to the user, as well as full function access for those with limited mobility.



HEAT GUARD

Senses extreme temperatures (>158 °F ) and automatically adjusts the blower speed to HIGH.



REAR OUTLET  
INSTALLATION

The Easy Mounting System makes ducting out through the rear wall behind the hood canopy possible for this style hood.



ELICA EASY  
MOUNTING

Elica's patented Easy Mounting System enables hood installation to be done in easy steps, without ladders, without ladders, without the added cost of purchasing a specialized duct transition, and without the added cost of purchasing a duct cover to hide ducting connection points.



UNIQUE  
MATERIALS

Products designed with special materials and finishes with great aesthetic impact but also with practical and durable characteristics, perfect for the kitchen.



PROFESSIONAL  
PERFORMANCE

Special features and high performances for models with aspiration capacity between 600 and 1200 CFM's.



TOP  
PERFORMANCE

Excellent performance for models equipped with this plus. High fume capturing capacity with an average aspiration range of 600 CFM's. with low noise levels, 1.2 - 1.7 sones at working speed.



TOUCH  
CONTROL

Multifunction electronic touch control behind sleek black glass and illuminate red when activated.



HUSH  
SYSTEM

An exclusive sound deadening technology that effectively reduces sound levels by over 35%.



TOTAL  
INTEGRATION

The total look trend is becoming increasingly popular in kitchens now, guaranteeing a uniform, linear design with respect to the space. The total integration products have been designed to be seamlessly integrated into the kitchen whilst maintaining harmony with the surroundings.



SUPER EASY  
INSTALLATION

Installation can be done in total safety in just a few steps, safeguarding the look of the product and the space in which is positioned.

# ELICA'S EXCLUSIVE FEATURES



OPEN  
DOOR ALARM

## REFRIGERATION

To save energy and ensure proper preservation of your beverages, all Elica Undercabinet Refrigeration products come with a Door-Open Alarm, that will repeatedly beep when the door has been left ajar for longer than 5 minutes.



CONCEALED  
HINGE

## REFRIGERATION

Door hinges are hidden within the door and do not extend above the top of the door, allowing for a cleaner, more refined appearance, plus enabling the refrigerator to fit tighter within cabinetry.



ECO-MODE

## REFRIGERATION

Sustainable and environmentally friendly: Eco-Mode will maintain optimum interior temperature, while saving energy consumption turning the lights OFF.



HIGH EFFICIENCY  
CARBON FILTERS

## REFRIGERATION

Elica's advanced Carbon Filters remove odors and other gaseous pollutants from the air, ensuring fresh and pure environment.



EPC  
TECHNOLOGY

## REFRIGERATION

Elica Perfect Climate with double air duct cooling system. Meet Elica's Intelligent System with sensors that deliver precise and consistent temperature & humidity evenly throughout the entire compartment, so that all stored bottles are preserved under the same conditions.



QUIET  
OPERATION

## REFRIGERATION

Elica offers a speed-controlled motor, reducing exterior sound levels, while offering high ventilation performance to keep constant interior temperature and dampening any possible vibration that could disturb the preservation of wine and beverages.



# CONTACT INFO

## TECHNICAL SUPPORT & WARRANTY SERVICE:

### **USA & CANADA - Western Provinces**

888 732 8018

[elica@servicepower.com](mailto:elica@servicepower.com)

### **CANADA - Ontario Province**

888 651 2534

[service@agintl.qc.ca](mailto:service@agintl.qc.ca)

### **CANADA - Quebec & Atlantic Provinces**

800 463 0119

[service@ateliersgpaquette.com](mailto:service@ateliersgpaquette.com)

## PARTS, KITS AND ACCESSORIES:

### **For USA and Canada:**

Contact: Encompass

800 432 8542

[encompass.com/brands/eli/Elica](https://encompass.com/brands/eli/Elica)

or

Repair Clinic

800-269-2609

Don't forget to Register your Product to earn a Warranty Extension



[www.elica.com](http://www.elica.com)

